

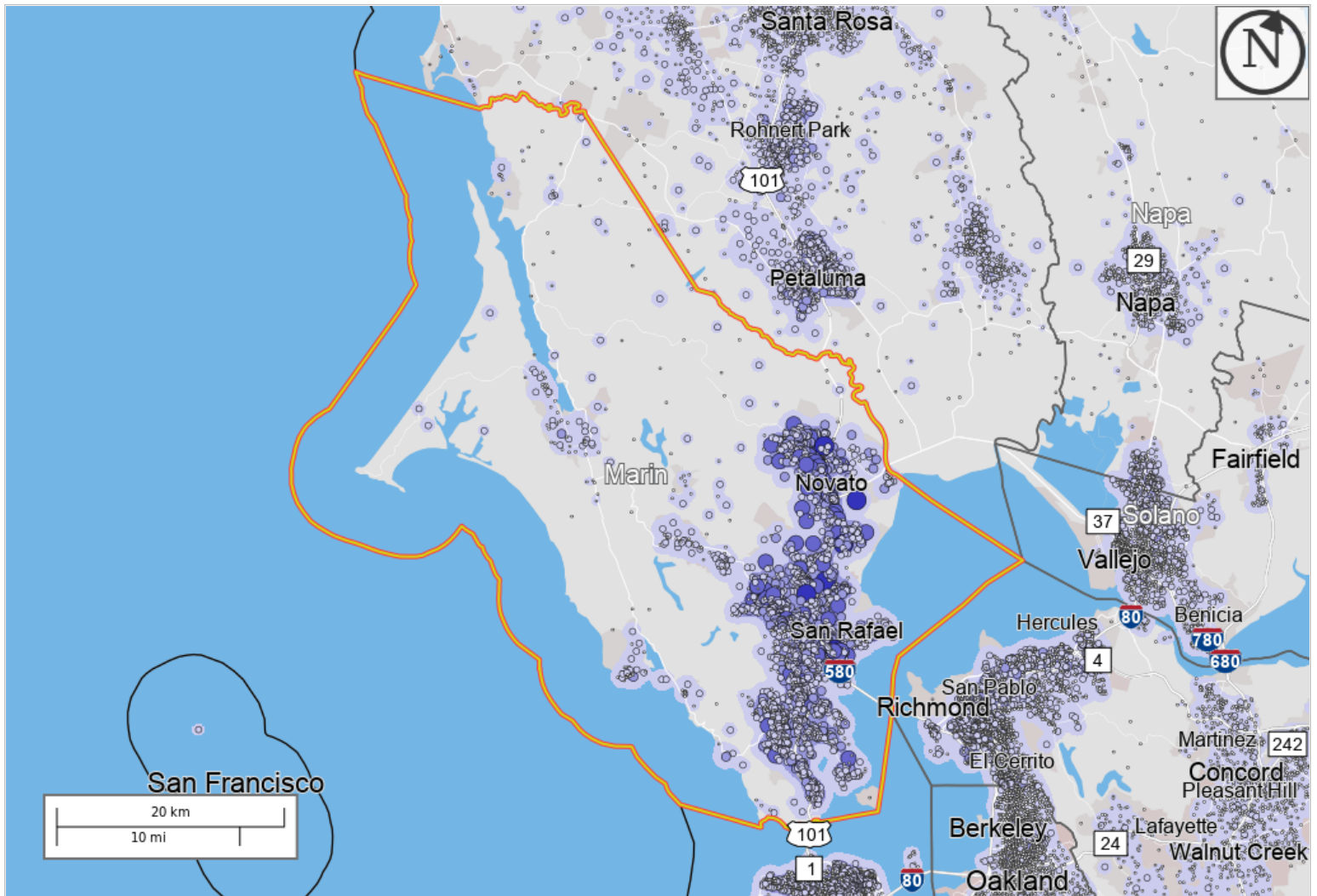
## Distance/Direction Report - Work to Home

### All Jobs for All Workers in 2019

Created by the U.S. Census Bureau's OnTheMap <https://onthemap.ces.census.gov> on 01/12/2022

## Counts and Density of Home Locations for All Jobs in Work Selection Area in 2019

### All Workers



### Map Legend

#### Job Density [Jobs/Sq. Mile]

- 5 - 125
- 126 - 487
- 488 - 1,089
- 1,090 - 1,933
- 1,934 - 3,018

#### Job Count [Jobs/Census Block]

- 1 - 4
- 5 - 28
- 29 - 93
- 94 - 219
- 220 - 428

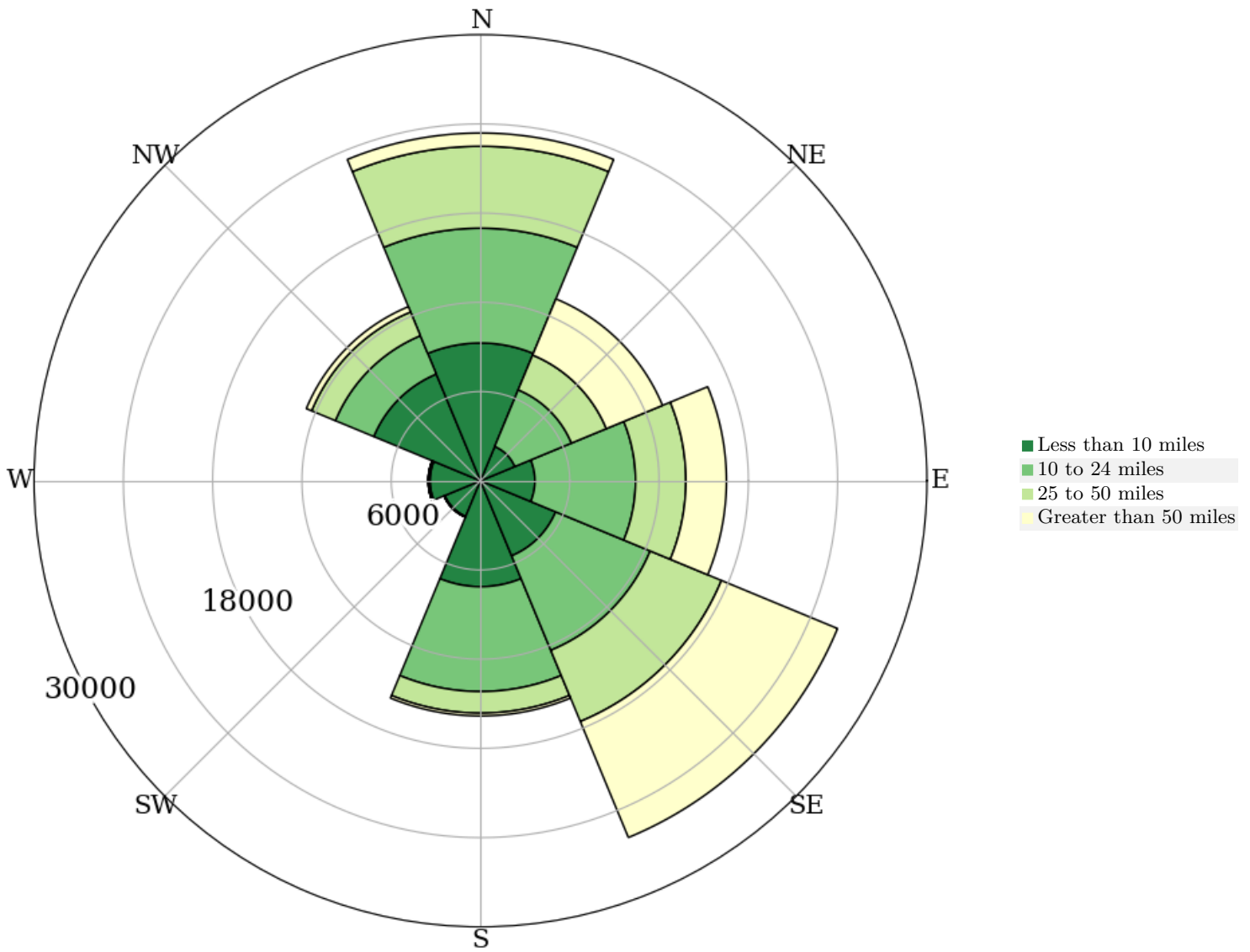
#### Selection Areas

- 🔴 Analysis Selection



## All Jobs for All Workers in 2019

Distance and Direction from Work Census Block to Home Census Block, Employed in Selection Area



## All Jobs for All Workers in 2019

Distance from Work Census Block to Home Census Block, Employed in Selection Area

Distance	2019	
	Count	Share
<b>Total All Jobs</b>	113,755	100.0
<b>Less than 10 miles</b>	41,755	36.7
<b>10 to 24 miles</b>	35,458	31.2
<b>25 to 50 miles</b>	19,814	17.4
<b>Greater than 50 miles</b>	16,728	14.7

## Additional Information

---

### Analysis Settings

<b>Analysis Type</b>	Distance/Direction
<b>Selection area as</b>	Work
<b>Year(s)</b>	2019
<b>Job Type</b>	All Jobs
<b>Selection Area</b>	Marin County, CA from Counties
<b>Selected Census Blocks</b>	4,506
<b>Analysis Generation Date</b>	01/12/2022 22:45 - OnTheMap 6.8.1
<b>Code Revision</b>	f9358819d46a60bb89052036516a1c8fe8bbbbeac
<b>LODES Data Version</b>	20211018_1647

### Data Sources

Source: U.S. Census Bureau, OnTheMap Application and LEHD Origin-Destination Employment Statistics (Beginning of Quarter Employment, 2nd Quarter of 2002-2019).

### Notes

1. Race, Ethnicity, Educational Attainment, and Sex statistics are beta release results and are not available before 2009.
2. Educational Attainment is only produced for workers aged 30 and over.
3. Firm Age and Firm Size statistics are beta release results for All Private jobs and are not available before 2011.

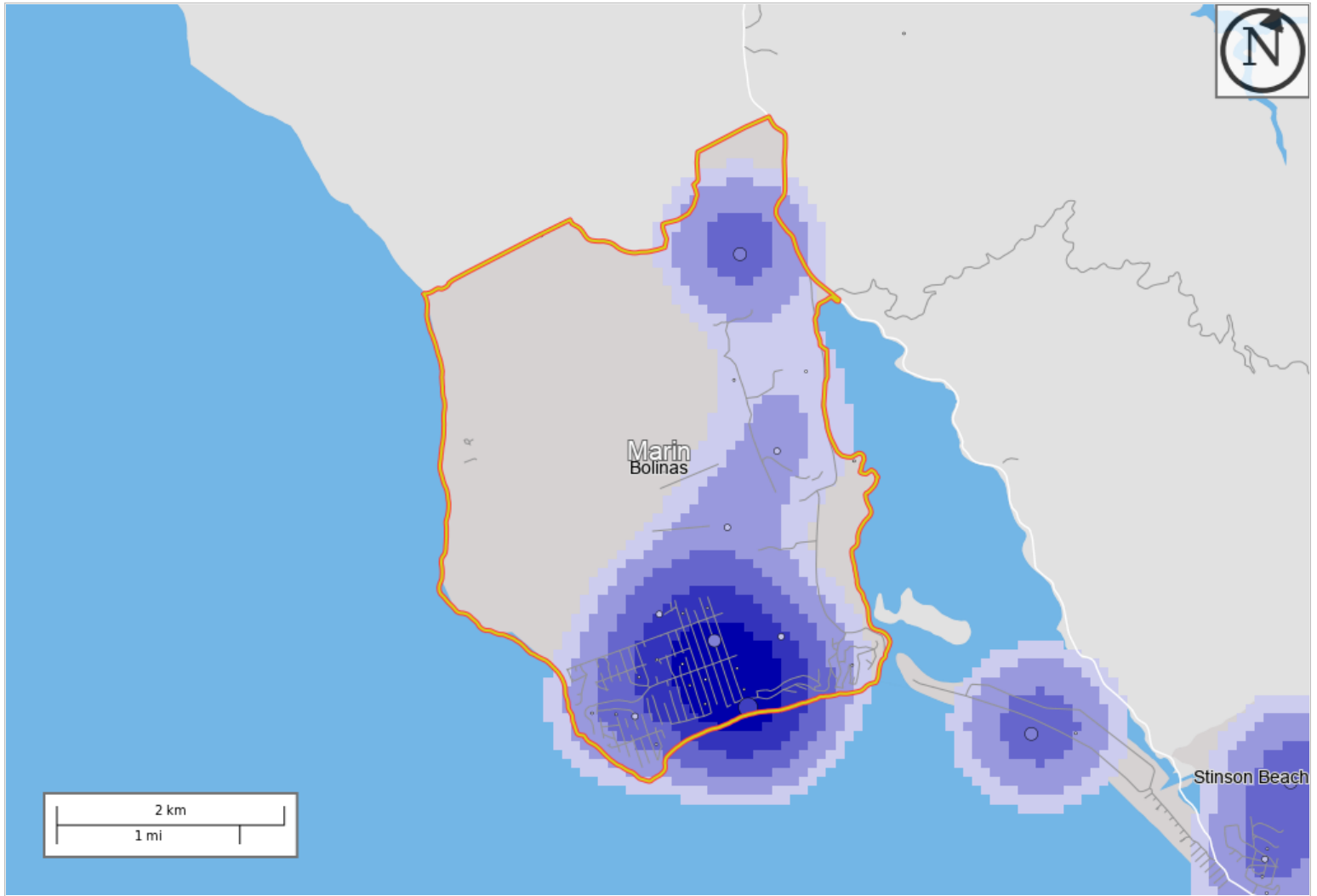
## Distance/Direction Report - Work to Home

### All Jobs for All Workers in 2019

Created by the U.S. Census Bureau's OnTheMap <https://onthemap.ces.census.gov> on 01/12/2022

### Counts and Density of Home Locations for All Jobs in Work Selection Area in 2019

#### All Workers



#### Map Legend

##### Job Density [Jobs/Sq. Mile]

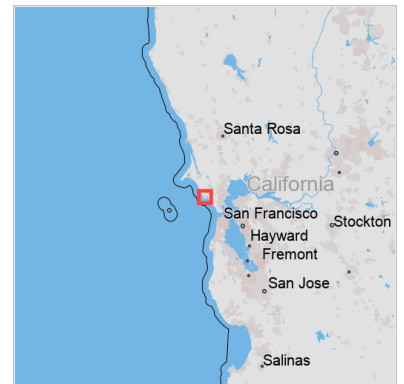
- 5 - 8
- 9 - 17
- 18 - 33
- 34 - 55
- 56 - 84

##### Job Count [Jobs/Census Block]

- 1 - 2
- 3 - 7
- 8 - 14
- 15 - 25

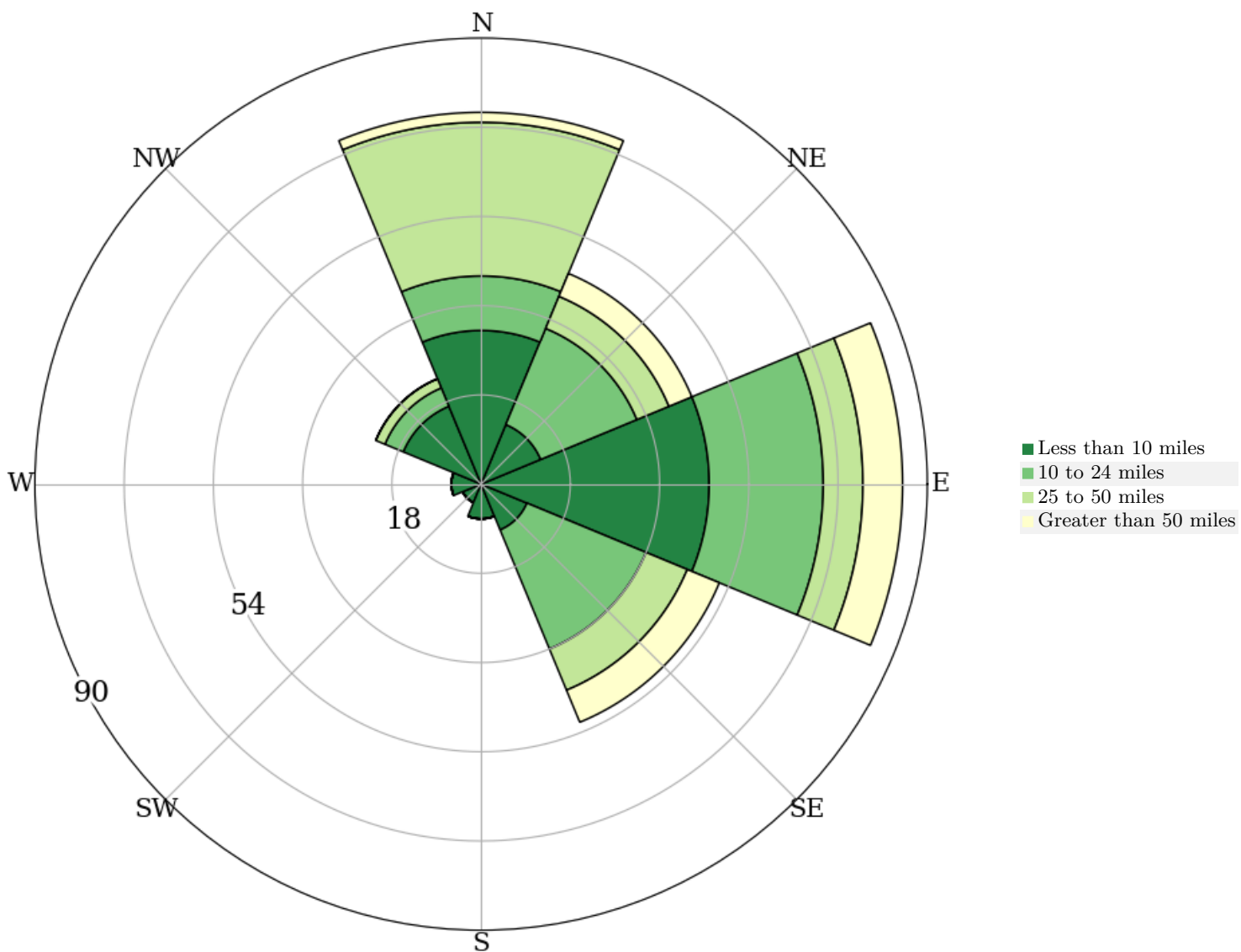
##### Selection Areas

- 🔴 Analysis Selection



# All Jobs for All Workers in 2019

Distance and Direction from Work Census Block to Home Census Block, Employed in Selection Area



# All Jobs for All Workers in 2019

Distance from Work Census Block to Home Census Block, Employed in Selection Area

Distance	2019	
	Count	Share
<b>Total All Jobs</b>	298	100.0
<b>Less than 10 miles</b>	134	45.0
<b>10 to 24 miles</b>	85	28.5
<b>25 to 50 miles</b>	57	19.1
<b>Greater than 50 miles</b>	22	7.4

## Additional Information

---

### Analysis Settings

<b>Analysis Type</b>	Distance/Direction
<b>Selection area as</b>	Work
<b>Year(s)</b>	2019
<b>Job Type</b>	All Jobs
<b>Selection Area</b>	Bolinas CDP, CA from Places (Cities, CDPs, etc.)
<b>Selected Census Blocks</b>	49
<b>Analysis Generation Date</b>	01/12/2022 22:30 - OnTheMap 6.8.1
<b>Code Revision</b>	f9358819d46a60bb89052036516a1c8fe8bbbbeac
<b>LODES Data Version</b>	20211018_1647

### Data Sources

Source: U.S. Census Bureau, OnTheMap Application and LEHD Origin-Destination Employment Statistics (Beginning of Quarter Employment, 2nd Quarter of 2002-2019).

### Notes

1. Race, Ethnicity, Educational Attainment, and Sex statistics are beta release results and are not available before 2009.
2. Educational Attainment is only produced for workers aged 30 and over.
3. Firm Age and Firm Size statistics are beta release results for All Private jobs and are not available before 2011.

## Distance/Direction Report - Work to Home

### All Jobs for All Workers in 2019

Created by the U.S. Census Bureau's OnTheMap <https://onthemap.ces.census.gov> on 01/12/2022

## Counts and Density of Home Locations for All Jobs in Work Selection Area in 2019

### All Workers



### Map Legend

**Job Density [Jobs/Sq. Mile]**

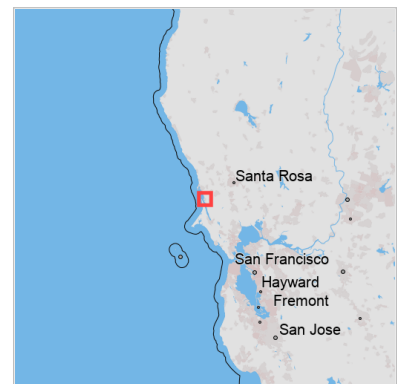
■ 5 - 6

**Job Count [Jobs/Census Block]**

○ 1 - 2

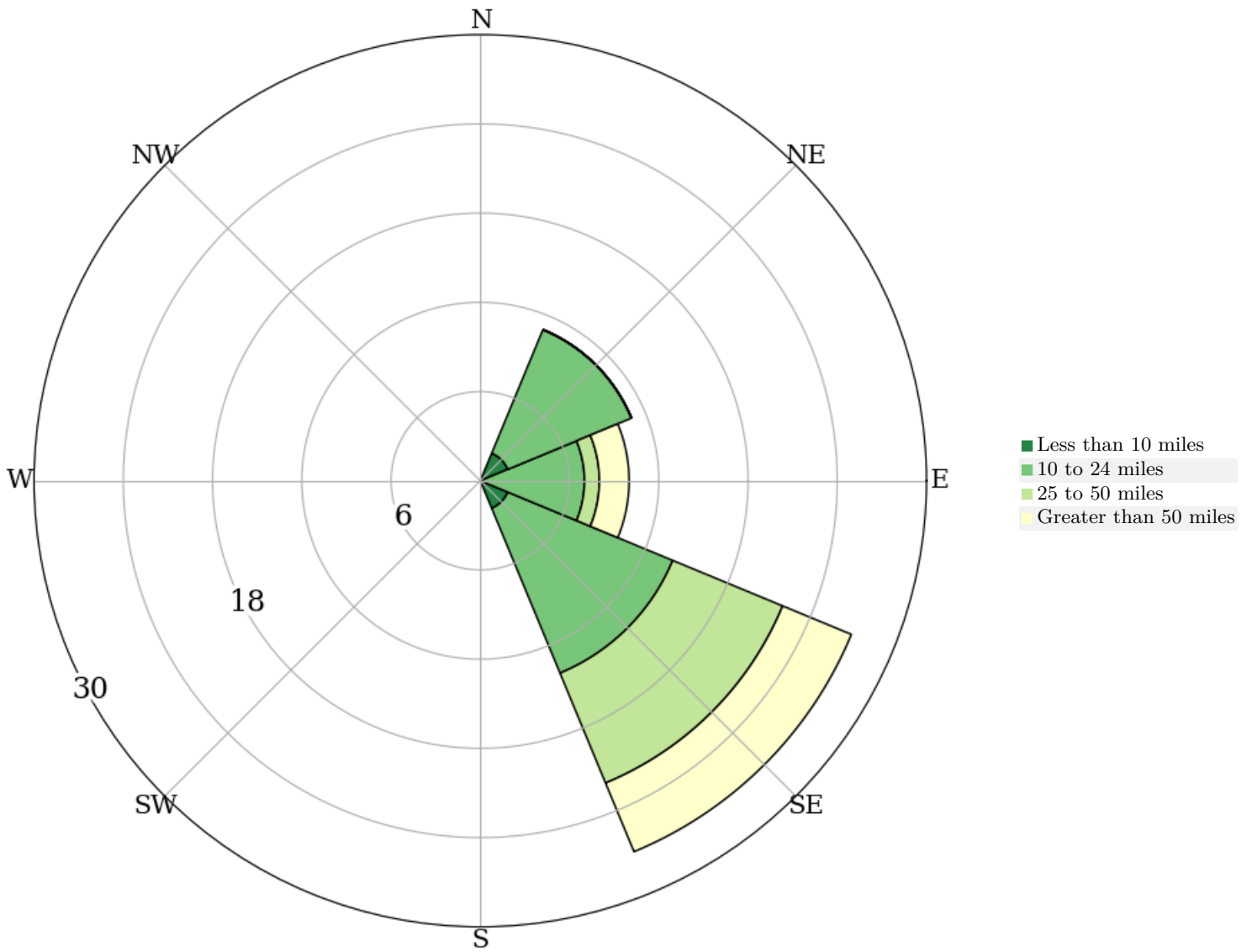
**Selection Areas**

🔴 Analysis Selection



# All Jobs for All Workers in 2019

Distance and Direction from Work Census Block to Home Census Block, Employed in Selection Area



# All Jobs for All Workers in 2019

Distance from Work Census Block to Home Census Block, Employed in Selection Area

Distance	2019	
	Count	Share
<b>Total All Jobs</b>	48	100.0
Less than 10 miles	4	8.3
10 to 24 miles	28	58.3
25 to 50 miles	9	18.8
Greater than 50 miles	7	14.6



## Additional Information

---

### Analysis Settings

<b>Analysis Type</b>	Distance/Direction
<b>Selection area as</b>	Work
<b>Year(s)</b>	2019
<b>Job Type</b>	All Jobs
<b>Selection Area</b>	Dillon Beach CDP, CA from Places (Cities, CDPs, etc.)
<b>Selected Census Blocks</b>	24
<b>Analysis Generation Date</b>	01/12/2022 22:32 - OnTheMap 6.8.1
<b>Code Revision</b>	f9358819d46a60bb89052036516a1c8fe8bbbbeac
<b>LODES Data Version</b>	20211018_1647

### Data Sources

Source: U.S. Census Bureau, OnTheMap Application and LEHD Origin-Destination Employment Statistics (Beginning of Quarter Employment, 2nd Quarter of 2002-2019).

### Notes

1. Race, Ethnicity, Educational Attainment, and Sex statistics are beta release results and are not available before 2009.
2. Educational Attainment is only produced for workers aged 30 and over.
3. Firm Age and Firm Size statistics are beta release results for All Private jobs and are not available before 2011.

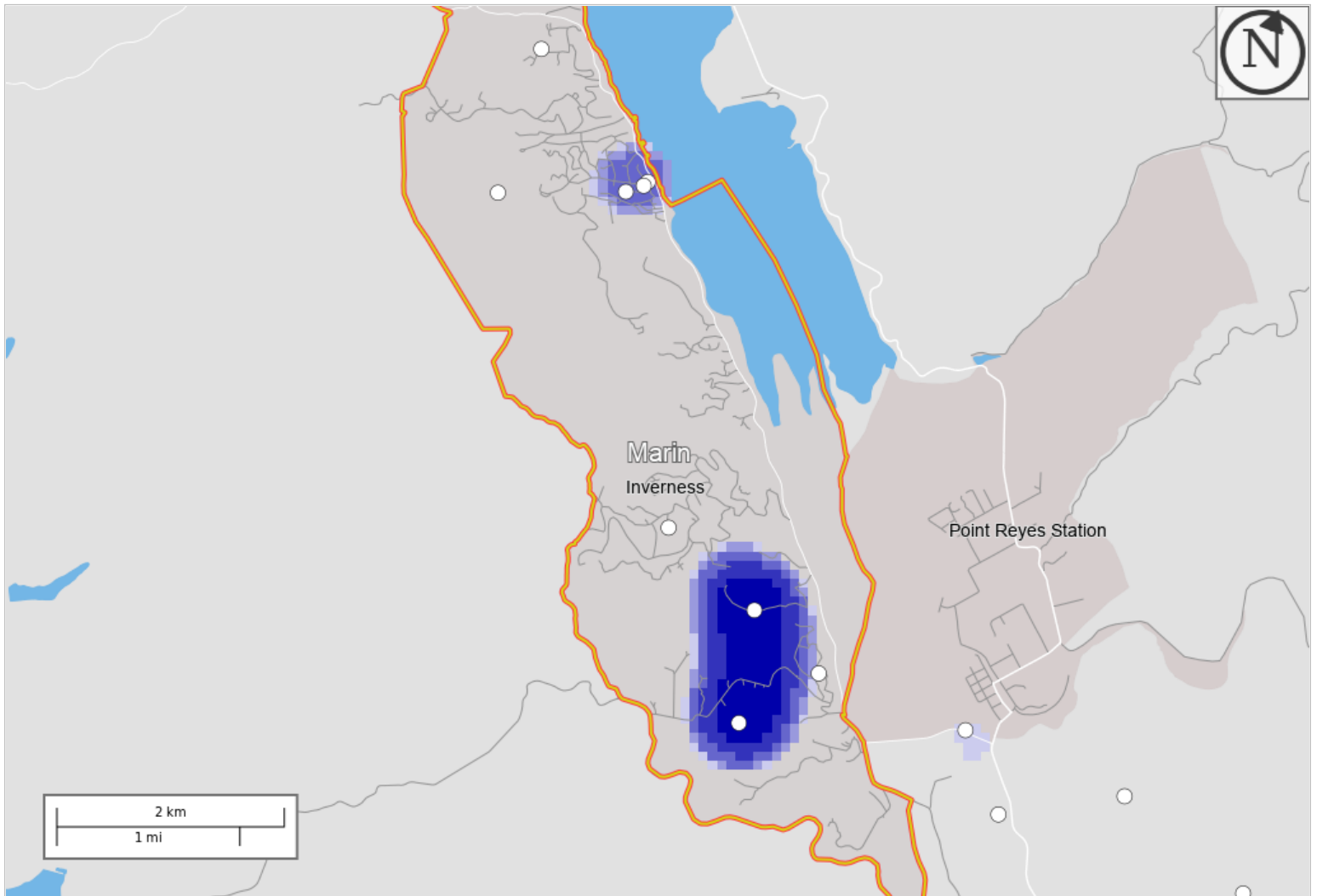
## Distance/Direction Report - Work to Home

### All Jobs for All Workers in 2019

Created by the U.S. Census Bureau's OnTheMap <https://onthemap.ces.census.gov> on 01/12/2022

### Counts and Density of Home Locations for All Jobs in Work Selection Area in 2019

#### All Workers



#### Map Legend

##### Job Density [Jobs/Sq. Mile]

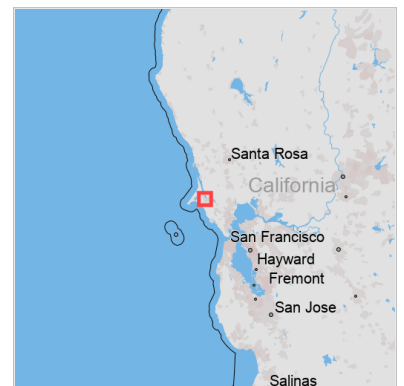
- 5 - 6
- 7 - 10

##### Job Count [Jobs/Census Block]

- 1 - 4

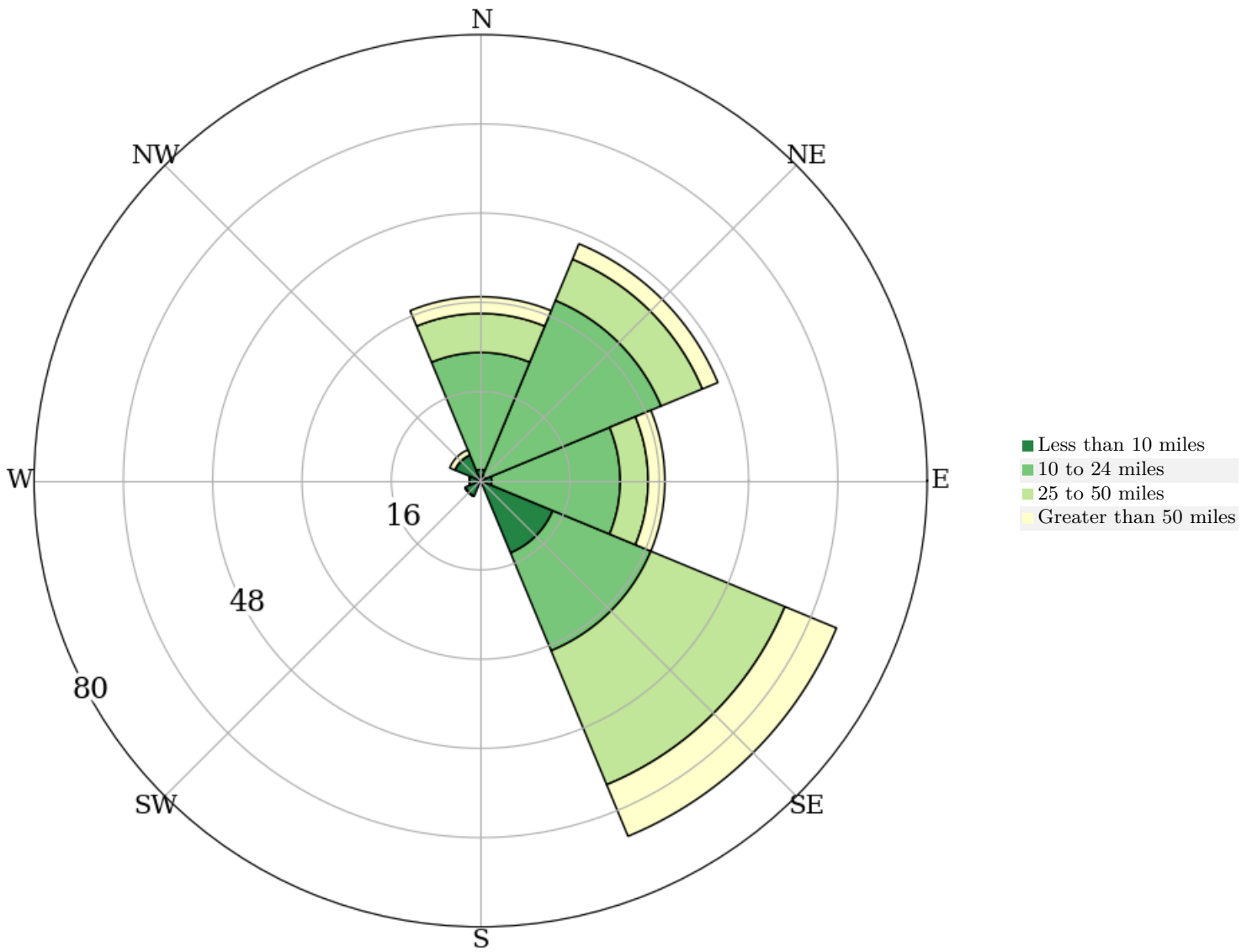
##### Selection Areas

- 🔷 Analysis Selection



## All Jobs for All Workers in 2019

Distance and Direction from Work Census Block to Home Census Block, Employed in Selection Area



## All Jobs for All Workers in 2019

Distance from Work Census Block to Home Census Block, Employed in Selection Area

Distance	2019	
	Count	Share
<b>Total All Jobs</b>	192	100.0
Less than 10 miles	29	15.1
10 to 24 miles	97	50.5
25 to 50 miles	46	24.0
Greater than 50 miles	20	10.4

## Additional Information

---

### Analysis Settings

<b>Analysis Type</b>	Distance/Direction
<b>Selection area as</b>	Work
<b>Year(s)</b>	2019
<b>Job Type</b>	All Jobs
<b>Selection Area</b>	Inverness CDP, CA from Places (Cities, CDPs, etc.)
<b>Selected Census Blocks</b>	66
<b>Analysis Generation Date</b>	01/12/2022 22:34 - OnTheMap 6.8.1
<b>Code Revision</b>	f9358819d46a60bb89052036516a1c8fe8bbbbeac
<b>LODES Data Version</b>	20211018_1647

### Data Sources

Source: U.S. Census Bureau, OnTheMap Application and LEHD Origin-Destination Employment Statistics (Beginning of Quarter Employment, 2nd Quarter of 2002-2019).

### Notes

1. Race, Ethnicity, Educational Attainment, and Sex statistics are beta release results and are not available before 2009.
2. Educational Attainment is only produced for workers aged 30 and over.
3. Firm Age and Firm Size statistics are beta release results for All Private jobs and are not available before 2011.

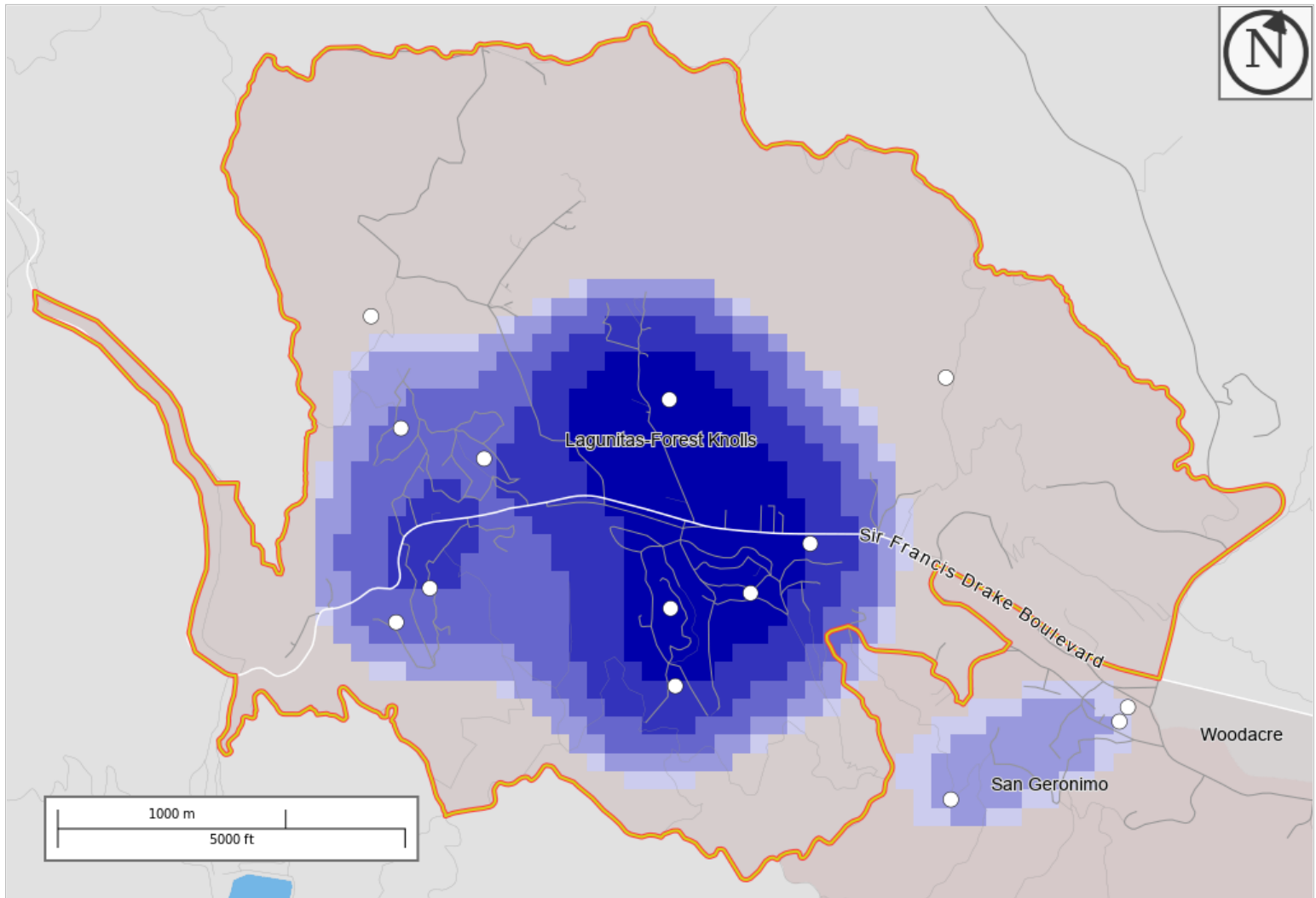
## Distance/Direction Report - Work to Home

### All Jobs for All Workers in 2019

Created by the U.S. Census Bureau's OnTheMap <https://onthemap.ces.census.gov> on 01/12/2022

## Counts and Density of Home Locations for All Jobs in Work Selection Area in 2019

### All Workers



### Map Legend

#### Job Density [Jobs/Sq. Mile]

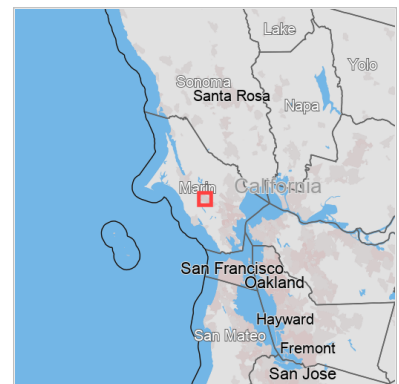
- 5 - 7
- 8 - 13

#### Job Count [Jobs/Census Block]

- 1 - 5

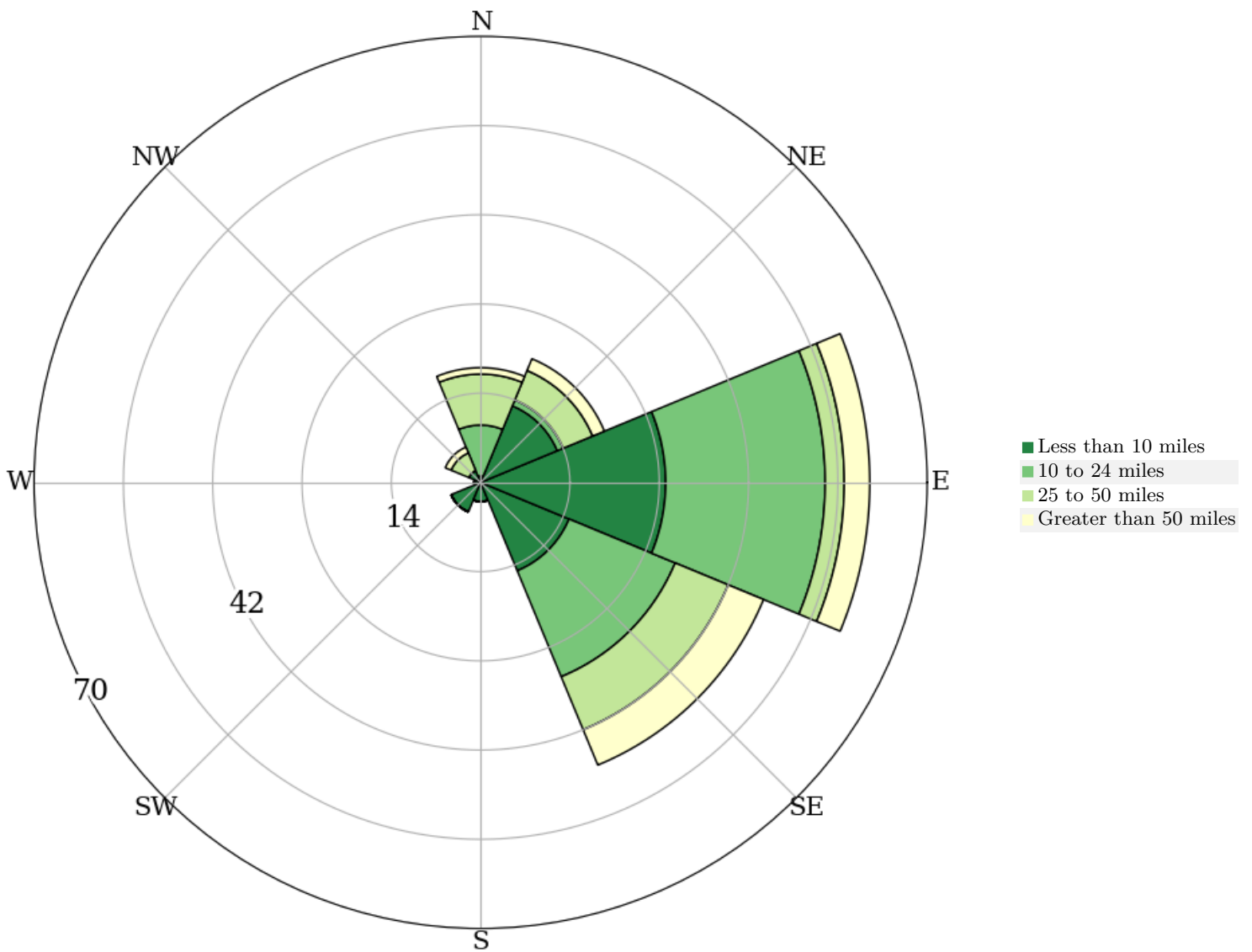
#### Selection Areas

- 🔴 Analysis Selection



# All Jobs for All Workers in 2019

Distance and Direction from Work Census Block to Home Census Block, Employed in Selection Area



# All Jobs for All Workers in 2019

Distance from Work Census Block to Home Census Block, Employed in Selection Area

Distance	2019	
	Count	Share
<b>Total All Jobs</b>	163	100.0
<b>Less than 10 miles</b>	69	42.3
<b>10 to 24 miles</b>	52	31.9
<b>25 to 50 miles</b>	28	17.2
<b>Greater than 50 miles</b>	14	8.6

## Additional Information

### Analysis Settings

<b>Analysis Type</b>	Distance/Direction
<b>Selection area as</b>	Work
<b>Year(s)</b>	2019
<b>Job Type</b>	All Jobs
<b>Selection Area</b>	Lagunitas-Forest Knolls CDP, CA from Places (Cities, CDPs, etc.)
<b>Selected Census Blocks</b>	44
<b>Analysis Generation Date</b>	01/12/2022 22:35 - OnTheMap 6.8.1
<b>Code Revision</b>	f9358819d46a60bb89052036516a1c8fe8bbbbeac
<b>LODES Data Version</b>	20211018_1647

### Data Sources

Source: U.S. Census Bureau, OnTheMap Application and LEHD Origin-Destination Employment Statistics (Beginning of Quarter Employment, 2nd Quarter of 2002-2019).

### Notes

1. Race, Ethnicity, Educational Attainment, and Sex statistics are beta release results and are not available before 2009.
2. Educational Attainment is only produced for workers aged 30 and over.
3. Firm Age and Firm Size statistics are beta release results for All Private jobs and are not available before 2011.

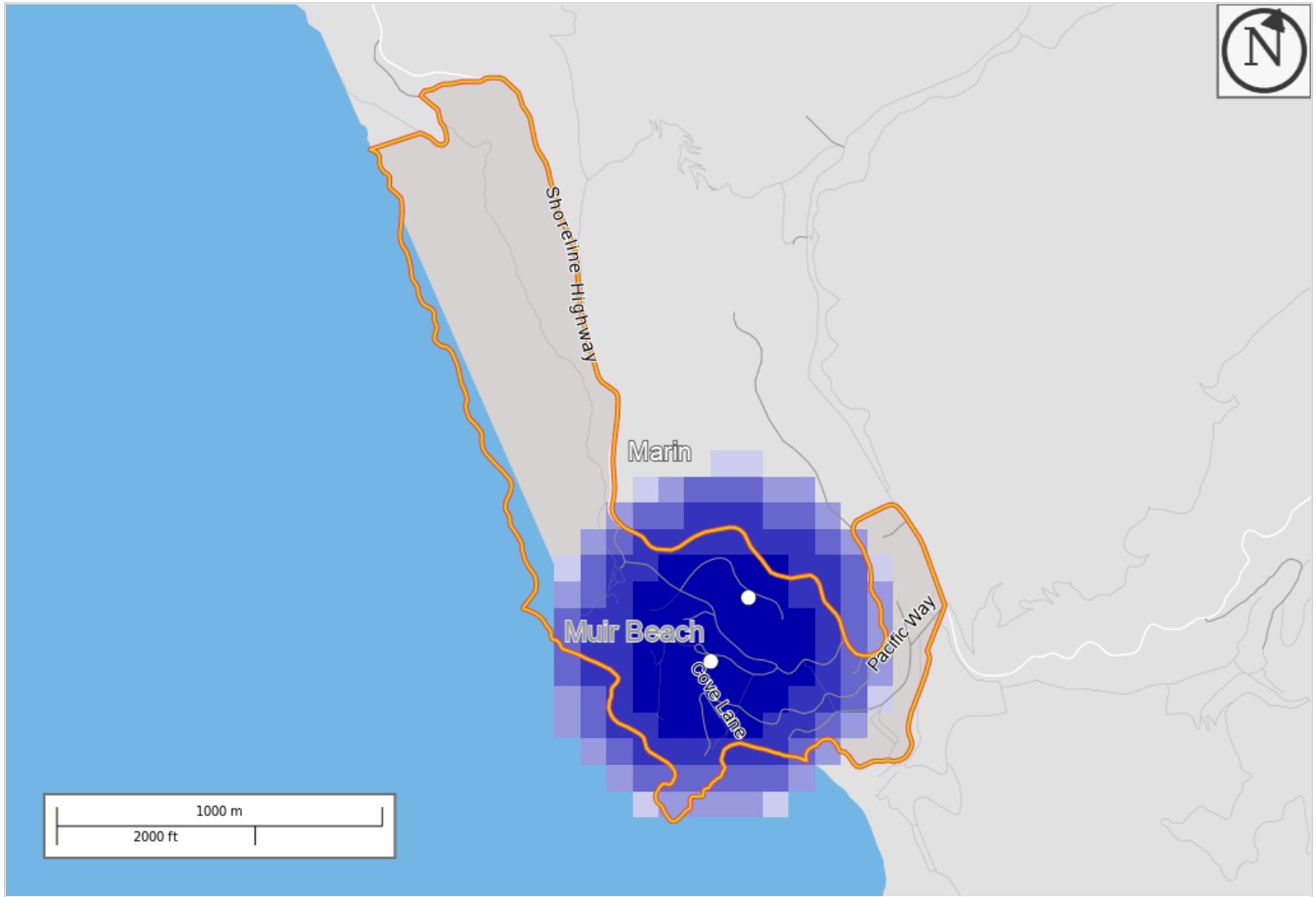
## Distance/Direction Report - Work to Home

### All Jobs for All Workers in 2019

Created by the U.S. Census Bureau's OnTheMap <https://onthemap.ces.census.gov> on 01/12/2022

## Counts and Density of Home Locations for All Jobs in Work Selection Area in 2019

### All Workers



### Map Legend

#### Job Density [Jobs/Sq. Mile]

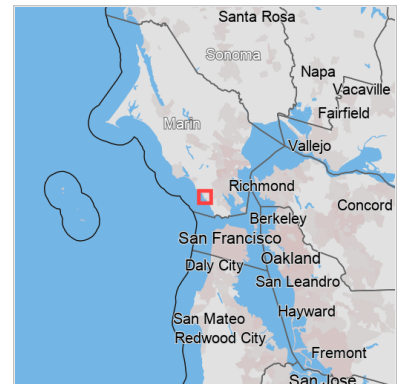
- 5 - 6
- 7 - 11

#### Job Count [Jobs/Census Block]

- 1 - 3

#### Selection Areas

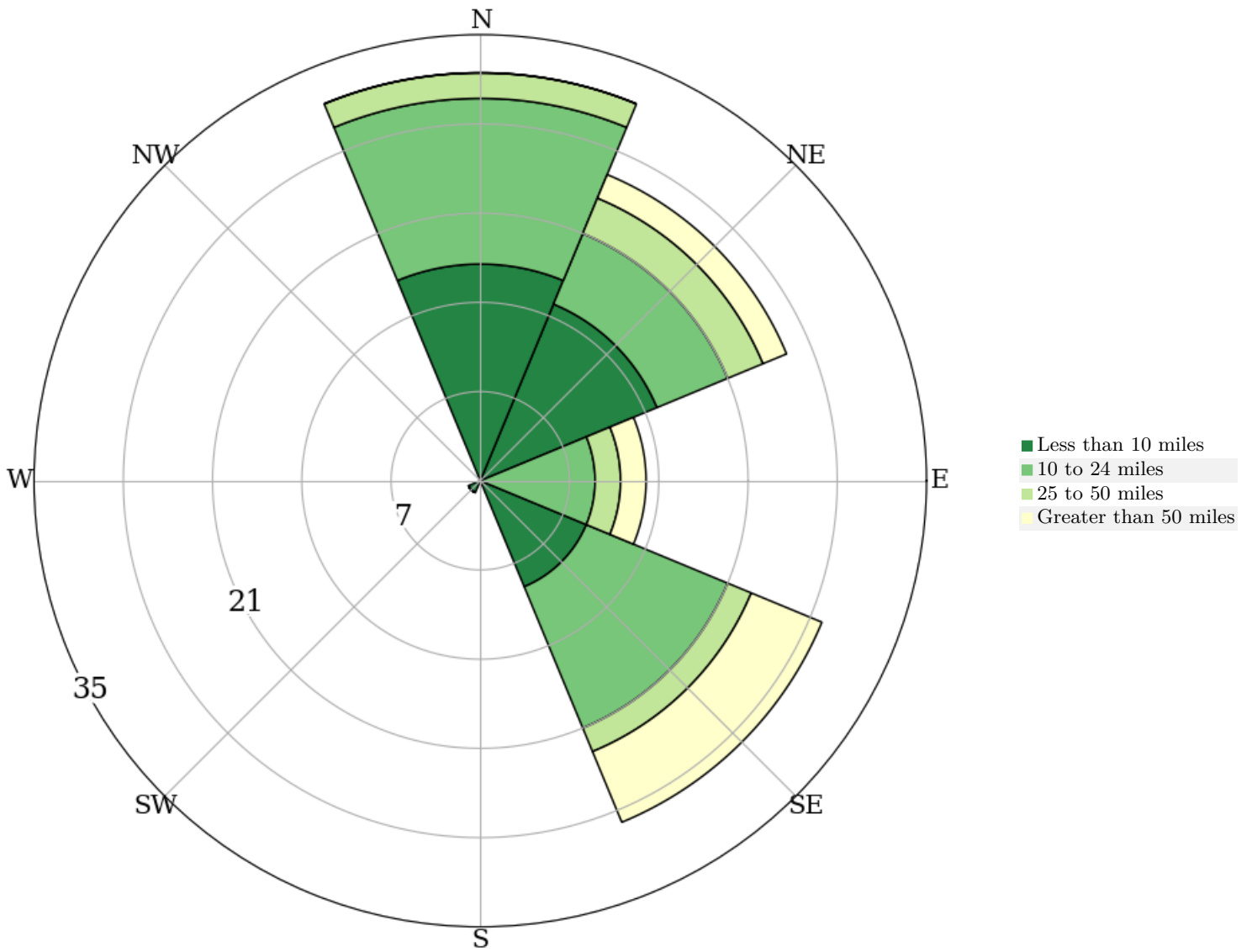
- 🔴 Analysis Selection





# All Jobs for All Workers in 2019

Distance and Direction from Work Census Block to Home Census Block, Employed in Selection Area



# All Jobs for All Workers in 2019

Distance from Work Census Block to Home Census Block, Employed in Selection Area

Distance	2019	
	Count	Share
<b>Total All Jobs</b>	101	100.0
<b>Less than 10 miles</b>	42	41.6
<b>10 to 24 miles</b>	40	39.6
<b>25 to 50 miles</b>	9	8.9
<b>Greater than 50 miles</b>	10	9.9

## Additional Information

---

### Analysis Settings

<b>Analysis Type</b>	Distance/Direction
<b>Selection area as</b>	Work
<b>Year(s)</b>	2019
<b>Job Type</b>	All Jobs
<b>Selection Area</b>	Muir Beach CDP, CA from Places (Cities, CDPs, etc.)
<b>Selected Census Blocks</b>	4
<b>Analysis Generation Date</b>	01/12/2022 22:38 - OnTheMap 6.8.1
<b>Code Revision</b>	f9358819d46a60bb89052036516a1c8fe8bbbbeac
<b>LODES Data Version</b>	20211018_1647

### Data Sources

Source: U.S. Census Bureau, OnTheMap Application and LEHD Origin-Destination Employment Statistics (Beginning of Quarter Employment, 2nd Quarter of 2002-2019).

### Notes

1. Race, Ethnicity, Educational Attainment, and Sex statistics are beta release results and are not available before 2009.
2. Educational Attainment is only produced for workers aged 30 and over.
3. Firm Age and Firm Size statistics are beta release results for All Private jobs and are not available before 2011.

## Distance/Direction Report - Work to Home

### All Jobs for All Workers in 2019

Created by the U.S. Census Bureau's OnTheMap <https://onthemap.ces.census.gov> on 01/12/2022

### Counts and Density of Home Locations for All Jobs in Work Selection Area in 2019

#### All Workers



#### Map Legend

**Job Density [Jobs/Sq. Mile]**

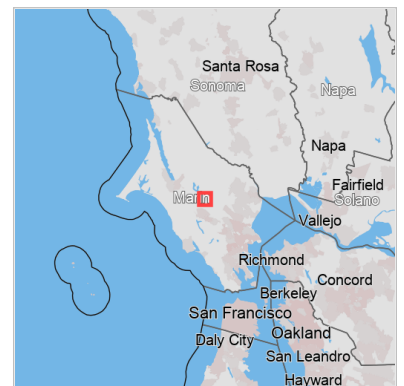
■ 5 - 6

**Job Count [Jobs/Census Block]**

○ 1 - 2

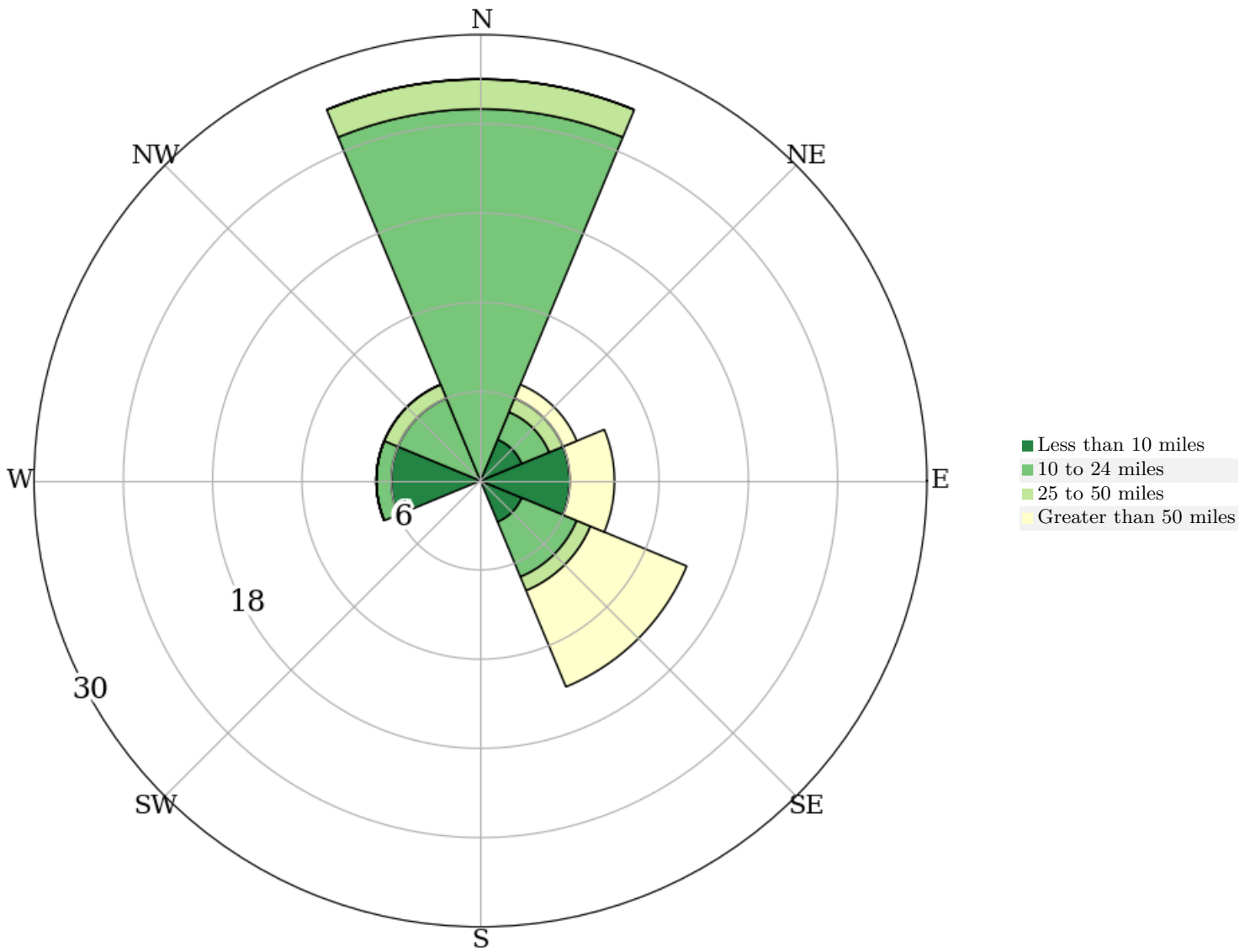
**Selection Areas**

🔴 Analysis Selection



## All Jobs for All Workers in 2019

Distance and Direction from Work Census Block to Home Census Block, Employed in Selection Area



## All Jobs for All Workers in 2019

Distance from Work Census Block to Home Census Block, Employed in Selection Area

Distance	2019	
	Count	Share
<b>Total All Jobs</b>	72	100.0
Less than 10 miles	18	25.0
10 to 24 miles	38	52.8
25 to 50 miles	5	6.9
Greater than 50 miles	11	15.3

## Additional Information

---

### Analysis Settings

<b>Analysis Type</b>	Distance/Direction
<b>Selection area as</b>	Work
<b>Year(s)</b>	2019
<b>Job Type</b>	All Jobs
<b>Selection Area</b>	Nicasio CDP, CA from Places (Cities, CDPs, etc.)
<b>Selected Census Blocks</b>	12
<b>Analysis Generation Date</b>	01/12/2022 22:37 - OnTheMap 6.8.1
<b>Code Revision</b>	f9358819d46a60bb89052036516a1c8fe8bbbbeac
<b>LODES Data Version</b>	20211018_1647

### Data Sources

Source: U.S. Census Bureau, OnTheMap Application and LEHD Origin-Destination Employment Statistics (Beginning of Quarter Employment, 2nd Quarter of 2002-2019).

### Notes

1. Race, Ethnicity, Educational Attainment, and Sex statistics are beta release results and are not available before 2009.
2. Educational Attainment is only produced for workers aged 30 and over.
3. Firm Age and Firm Size statistics are beta release results for All Private jobs and are not available before 2011.

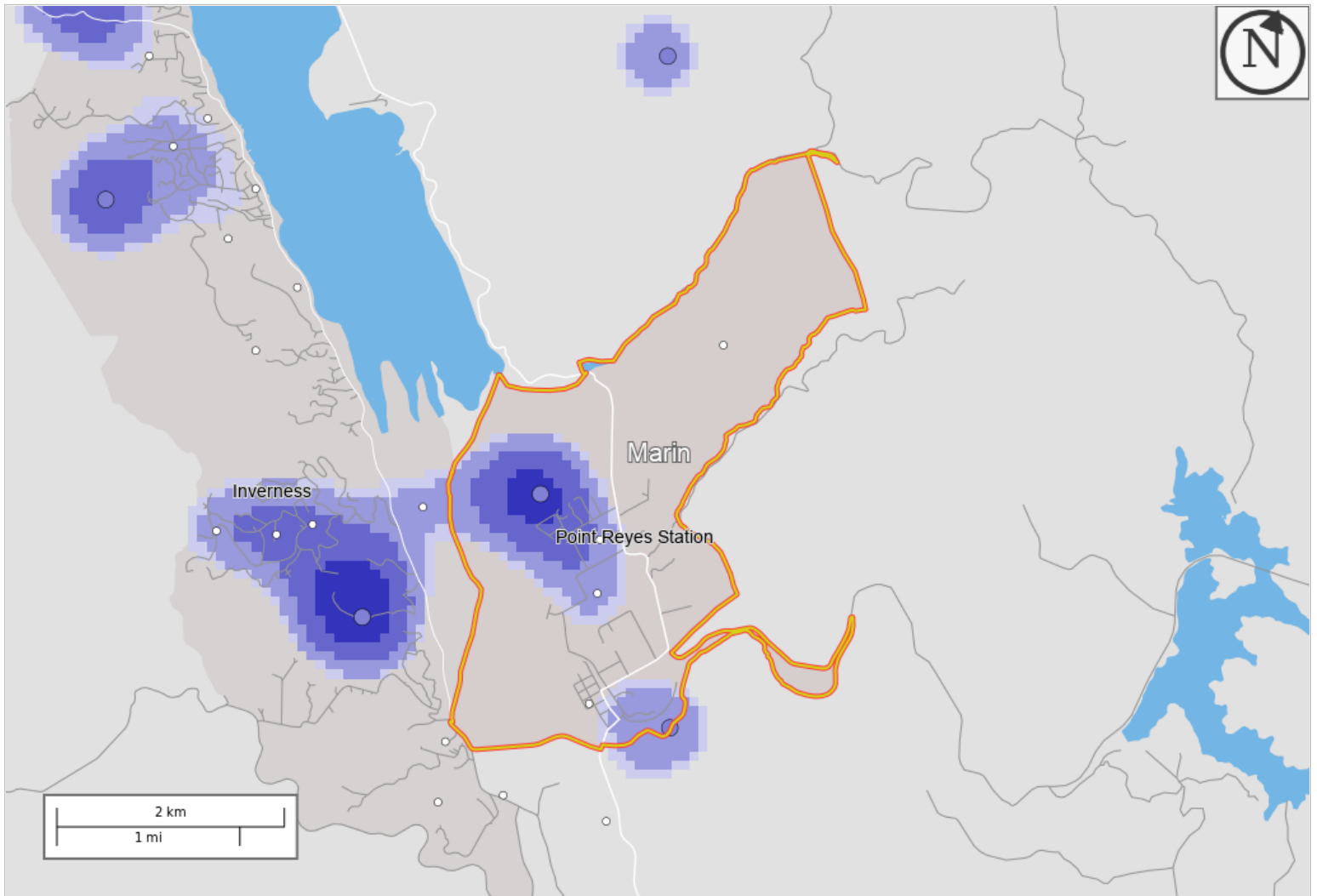
## Distance/Direction Report - Work to Home

### All Jobs for All Workers in 2019

Created by the U.S. Census Bureau's OnTheMap <https://onthemap.ces.census.gov> on 01/12/2022

## Counts and Density of Home Locations for All Jobs in Work Selection Area in 2019

### All Workers



### Map Legend

#### Job Density [Jobs/Sq. Mile]

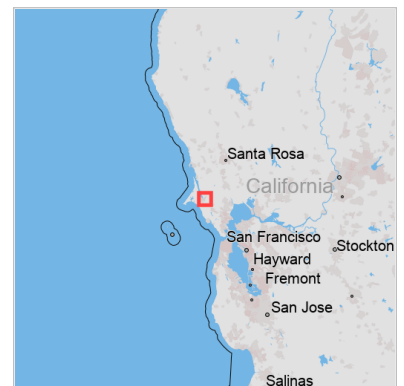
- 5 - 6
- 7 - 9
- 10 - 14
- 15 - 22

#### Job Count [Jobs/Census Block]

- 1 - 2
- 3 - 8

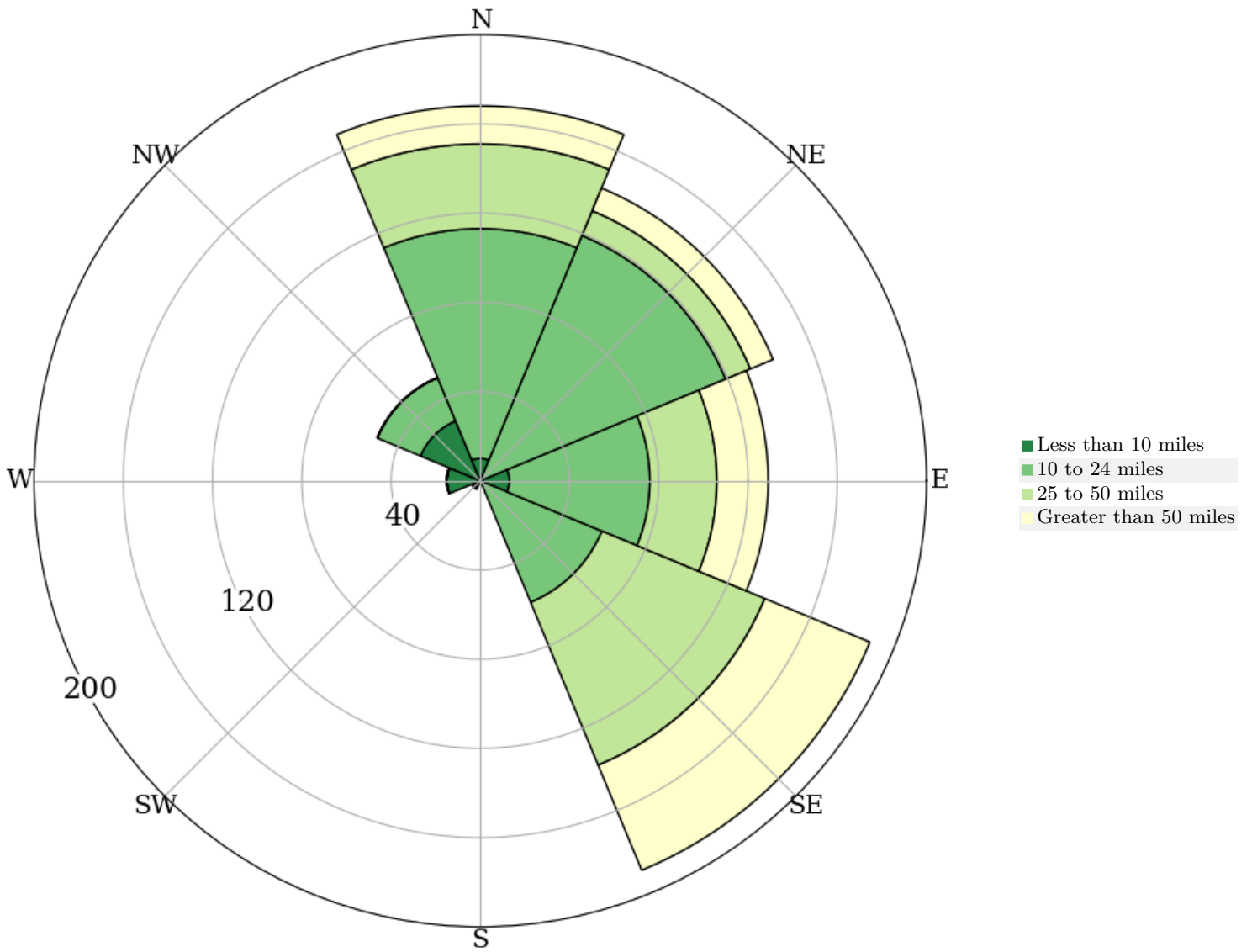
#### Selection Areas

- 🔴 Analysis Selection



## All Jobs for All Workers in 2019

Distance and Direction from Work Census Block to Home Census Block, Employed in Selection Area



## All Jobs for All Workers in 2019

Distance from Work Census Block to Home Census Block, Employed in Selection Area

Distance	2019	
	Count	Share
<b>Total All Jobs</b>	698	100.0
Less than 10 miles	73	10.5
10 to 24 miles	363	52.0
25 to 50 miles	160	22.9
Greater than 50 miles	102	14.6

## Additional Information

---

### Analysis Settings

<b>Analysis Type</b>	Distance/Direction
<b>Selection area as</b>	Work
<b>Year(s)</b>	2019
<b>Job Type</b>	All Jobs
<b>Selection Area</b>	Point Reyes Station CDP, CA from Places (Cities, CDPs, etc.)
<b>Selected Census Blocks</b>	24
<b>Analysis Generation Date</b>	01/12/2022 22:26 - OnTheMap 6.8.1
<b>Code Revision</b>	f9358819d46a60bb89052036516a1c8fe8bbbbeac
<b>LODES Data Version</b>	20211018_1647

### Data Sources

Source: U.S. Census Bureau, OnTheMap Application and LEHD Origin-Destination Employment Statistics (Beginning of Quarter Employment, 2nd Quarter of 2002-2019).

### Notes

1. Race, Ethnicity, Educational Attainment, and Sex statistics are beta release results and are not available before 2009.
2. Educational Attainment is only produced for workers aged 30 and over.
3. Firm Age and Firm Size statistics are beta release results for All Private jobs and are not available before 2011.



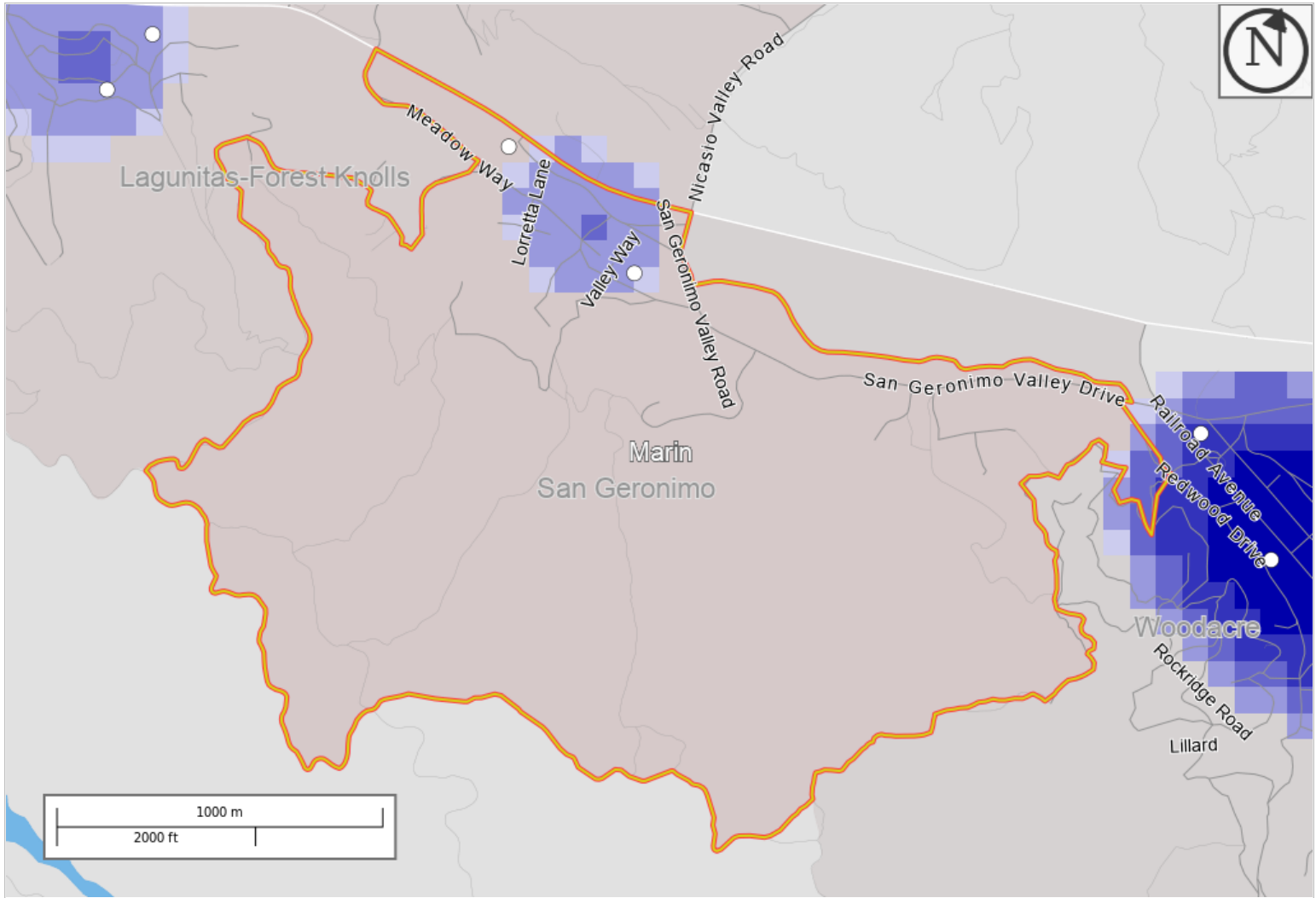
## Distance/Direction Report - Work to Home

### All Jobs for All Workers in 2019

Created by the U.S. Census Bureau's OnTheMap <https://onthemap.ces.census.gov> on 01/12/2022

## Counts and Density of Home Locations for All Jobs in Work Selection Area in 2019

### All Workers



### Map Legend

#### Job Density [Jobs/Sq. Mile]

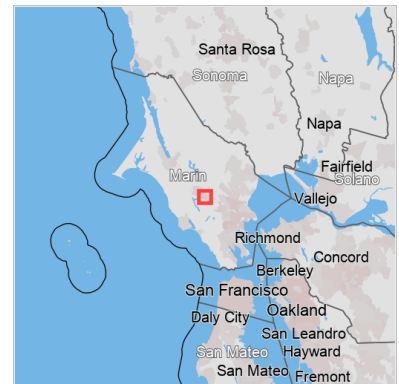
- 5 - 6
- 7 - 9

#### Job Count [Jobs/Census Block]

- 1 - 2

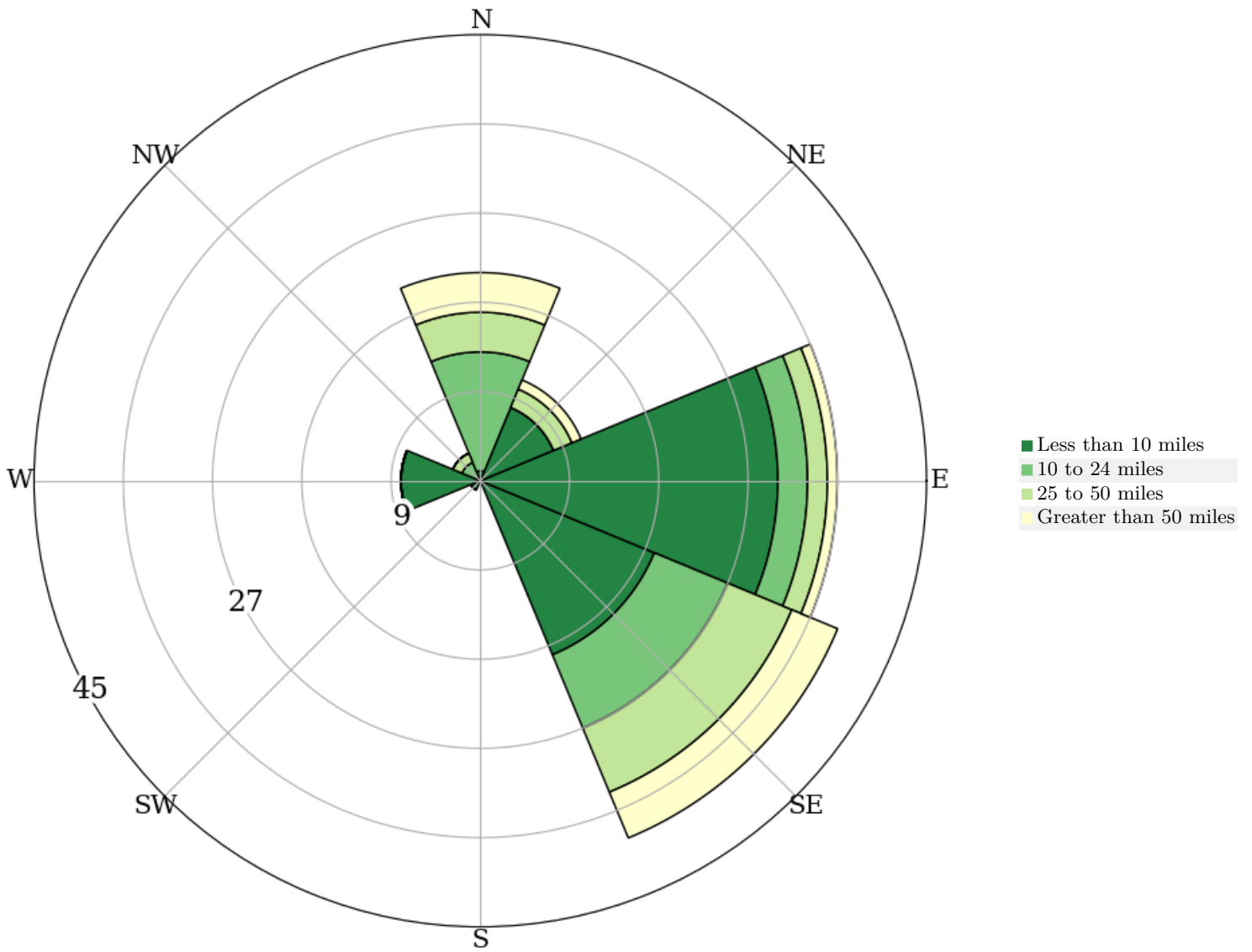
#### Selection Areas

- 🔴 Analysis Selection



# All Jobs for All Workers in 2019

Distance and Direction from Work Census Block to Home Census Block, Employed in Selection Area



# All Jobs for All Workers in 2019

Distance from Work Census Block to Home Census Block, Employed in Selection Area

Distance	2019	
	Count	Share
<b>Total All Jobs</b>	119	100.0
<b>Less than 10 miles</b>	67	56.3
<b>10 to 24 miles</b>	25	21.0
<b>25 to 50 miles</b>	16	13.4
<b>Greater than 50 miles</b>	11	9.2

## Additional Information

---

### Analysis Settings

<b>Analysis Type</b>	Distance/Direction
<b>Selection area as</b>	Work
<b>Year(s)</b>	2019
<b>Job Type</b>	All Jobs
<b>Selection Area</b>	San Geronimo CDP, CA from Places (Cities, CDPs, etc.)
<b>Selected Census Blocks</b>	13
<b>Analysis Generation Date</b>	01/12/2022 22:40 - OnTheMap 6.8.1
<b>Code Revision</b>	f9358819d46a60bb89052036516a1c8fe8bbbbeac
<b>LODES Data Version</b>	20211018_1647

### Data Sources

Source: U.S. Census Bureau, OnTheMap Application and LEHD Origin-Destination Employment Statistics (Beginning of Quarter Employment, 2nd Quarter of 2002-2019).

### Notes

1. Race, Ethnicity, Educational Attainment, and Sex statistics are beta release results and are not available before 2009.
2. Educational Attainment is only produced for workers aged 30 and over.
3. Firm Age and Firm Size statistics are beta release results for All Private jobs and are not available before 2011.

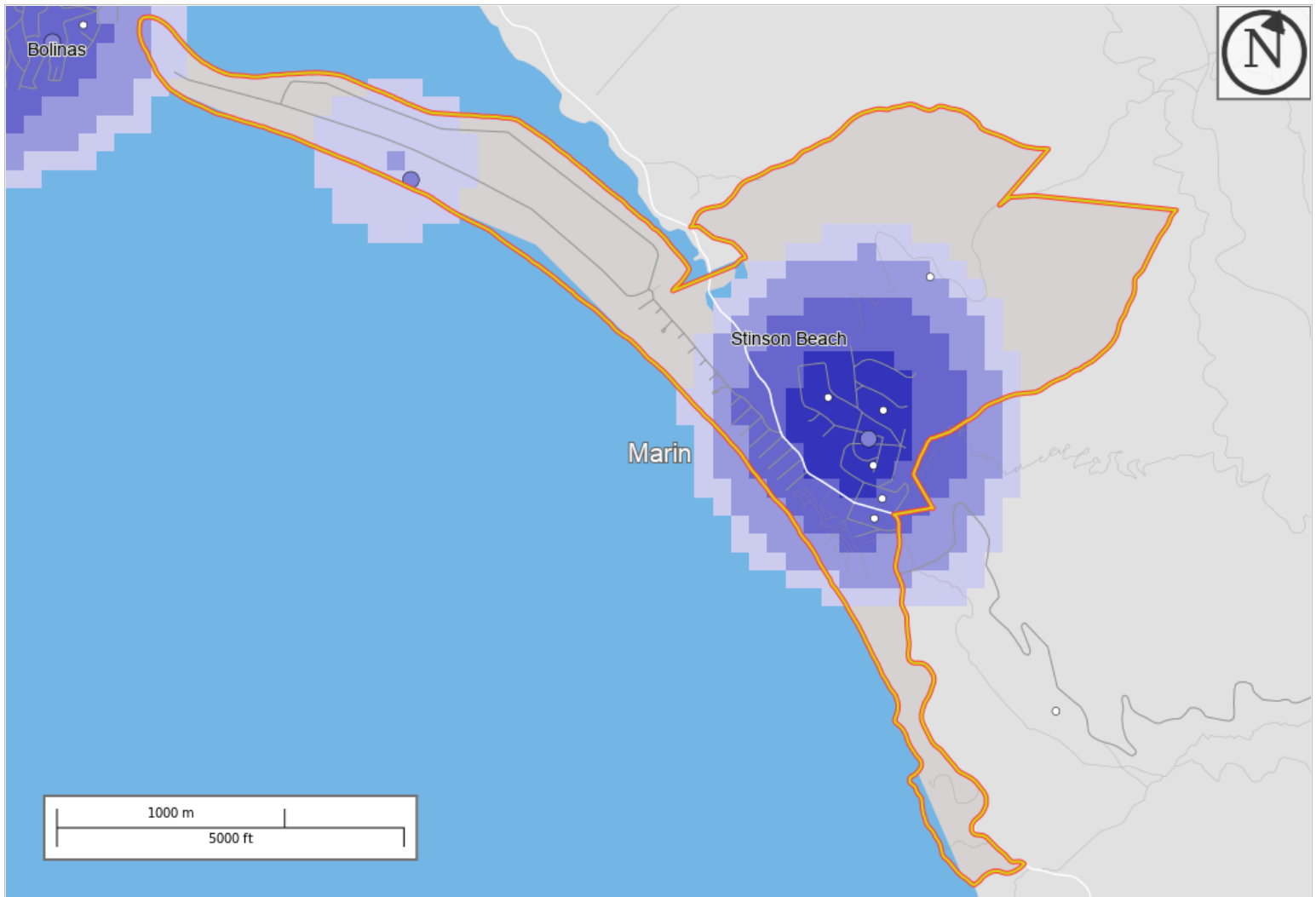
# Distance/Direction Report - Work to Home

## All Jobs for All Workers in 2019

Created by the U.S. Census Bureau's OnTheMap <https://onthemap.ces.census.gov> on 01/12/2022

### Counts and Density of Home Locations for All Jobs in Work Selection Area in 2019

#### All Workers



### Map Legend

#### Job Density [Jobs/Sq. Mile]

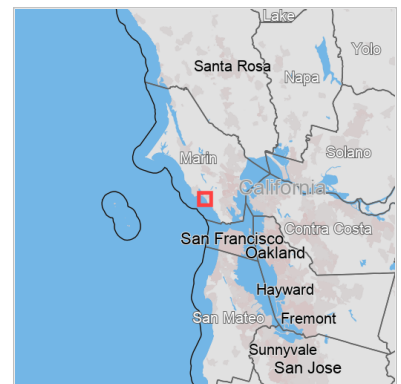
- 5 - 6
- 7 - 9
- 10 - 16
- 17 - 24
- 25 - 36

#### Job Count [Jobs/Census Block]

- 1 - 2
- 3 - 8

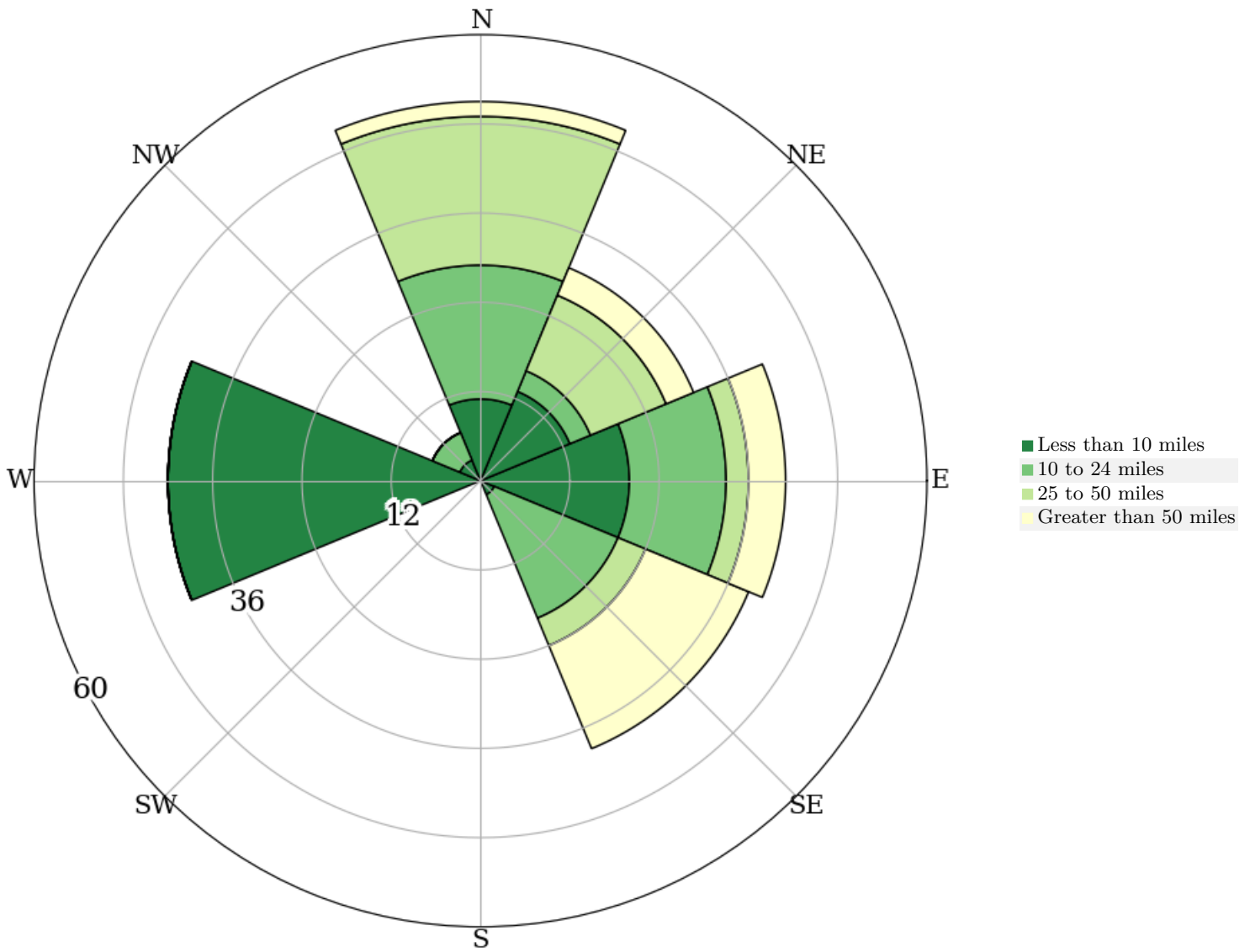
#### Selection Areas

- 🔴 Analysis Selection



# All Jobs for All Workers in 2019

Distance and Direction from Work Census Block to Home Census Block, Employed in Selection Area



# All Jobs for All Workers in 2019

Distance from Work Census Block to Home Census Block, Employed in Selection Area

Distance	2019	
	Count	Share
<b>Total All Jobs</b>	211	100.0
<b>Less than 10 miles</b>	91	43.1
<b>10 to 24 miles</b>	56	26.5
<b>25 to 50 miles</b>	38	18.0
<b>Greater than 50 miles</b>	26	12.3

## Additional Information

---

### Analysis Settings

<b>Analysis Type</b>	Distance/Direction
<b>Selection area as</b>	Work
<b>Year(s)</b>	2019
<b>Job Type</b>	All Jobs
<b>Selection Area</b>	Stinson Beach CDP, CA from Places (Cities, CDPs, etc.)
<b>Selected Census Blocks</b>	13
<b>Analysis Generation Date</b>	01/12/2022 22:41 - OnTheMap 6.8.1
<b>Code Revision</b>	f9358819d46a60bb89052036516a1c8fe8bbbbeac
<b>LODES Data Version</b>	20211018_1647

### Data Sources

Source: U.S. Census Bureau, OnTheMap Application and LEHD Origin-Destination Employment Statistics (Beginning of Quarter Employment, 2nd Quarter of 2002-2019).

### Notes

1. Race, Ethnicity, Educational Attainment, and Sex statistics are beta release results and are not available before 2009.
2. Educational Attainment is only produced for workers aged 30 and over.
3. Firm Age and Firm Size statistics are beta release results for All Private jobs and are not available before 2011.

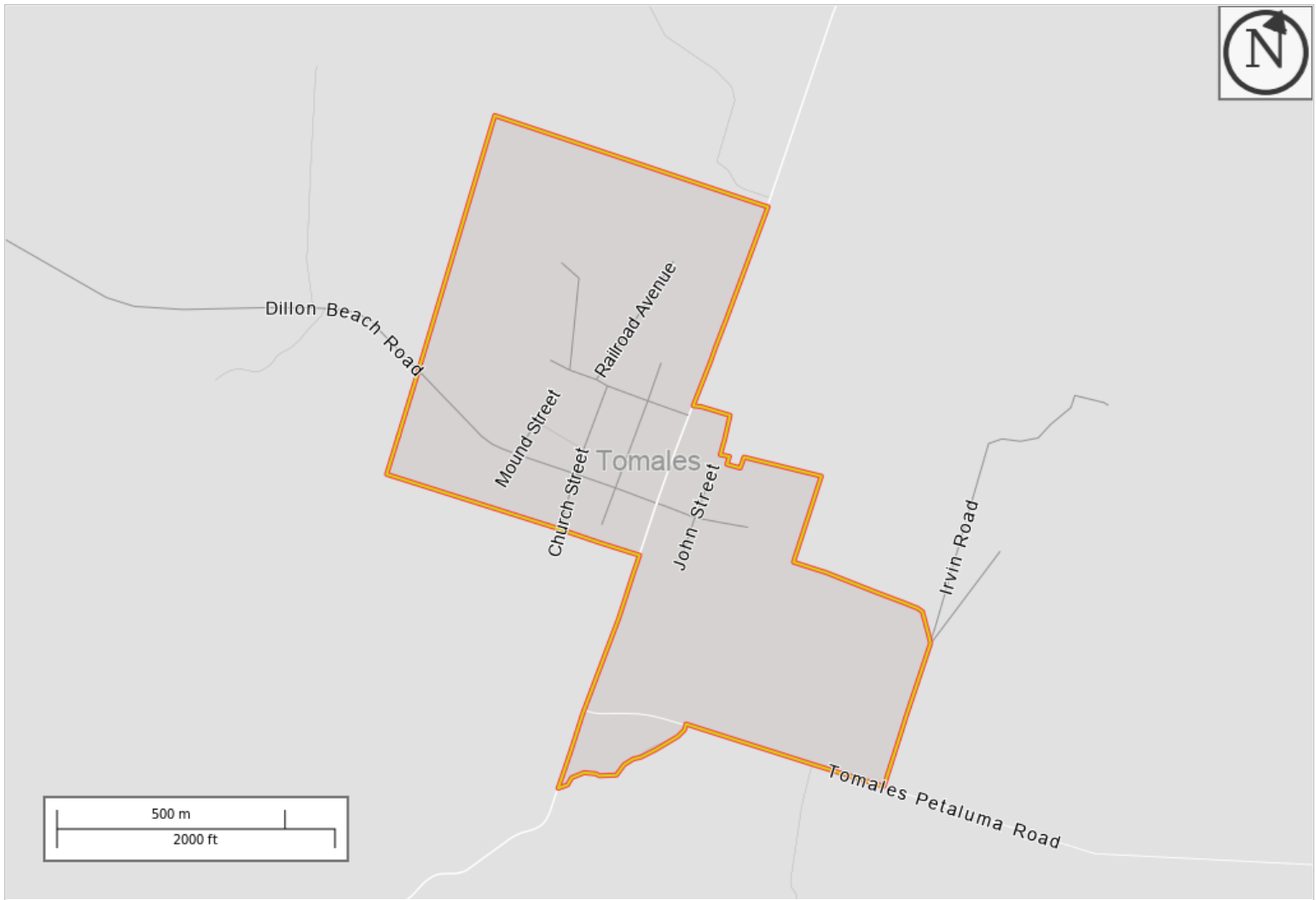
## Distance/Direction Report - Work to Home

### All Jobs for All Workers in 2019

Created by the U.S. Census Bureau's OnTheMap <https://onthemap.ces.census.gov> on 01/12/2022

## Counts and Density of Home Locations for All Jobs in Work Selection Area in 2019

### All Workers



### Map Legend

**Job Density [Jobs/Sq. Mile]**

■ 5 - 6

**Job Count [Jobs/Census Block]**

○ 1 - 2

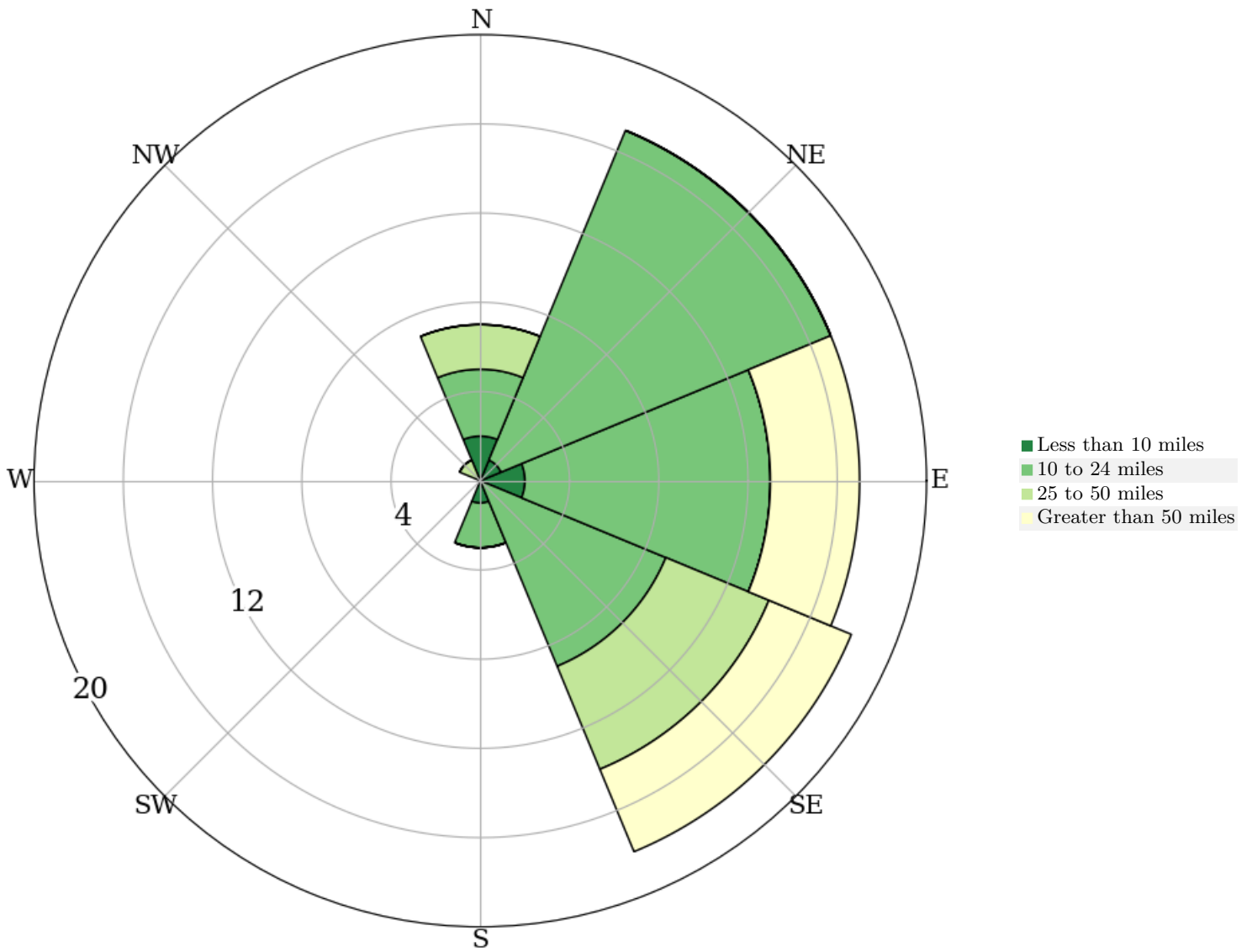
**Selection Areas**

🔴 Analysis Selection



# All Jobs for All Workers in 2019

Distance and Direction from Work Census Block to Home Census Block, Employed in Selection Area



# All Jobs for All Workers in 2019

Distance from Work Census Block to Home Census Block, Employed in Selection Area

Distance	2019	
	Count	Share
<b>Total All Jobs</b>	63	100.0
Less than 10 miles	6	9.5
10 to 24 miles	41	65.1
25 to 50 miles	8	12.7
Greater than 50 miles	8	12.7



## Additional Information

---

### Analysis Settings

<b>Analysis Type</b>	Distance/Direction
<b>Selection area as</b>	Work
<b>Year(s)</b>	2019
<b>Job Type</b>	All Jobs
<b>Selection Area</b>	Tomales CDP, CA from Places (Cities, CDPs, etc.)
<b>Selected Census Blocks</b>	13
<b>Analysis Generation Date</b>	01/12/2022 22:43 - OnTheMap 6.8.1
<b>Code Revision</b>	f9358819d46a60bb89052036516a1c8fe8bbbbeac
<b>LODES Data Version</b>	20211018_1647

### Data Sources

Source: U.S. Census Bureau, OnTheMap Application and LEHD Origin-Destination Employment Statistics (Beginning of Quarter Employment, 2nd Quarter of 2002-2019).

### Notes

1. Race, Ethnicity, Educational Attainment, and Sex statistics are beta release results and are not available before 2009.
2. Educational Attainment is only produced for workers aged 30 and over.
3. Firm Age and Firm Size statistics are beta release results for All Private jobs and are not available before 2011.

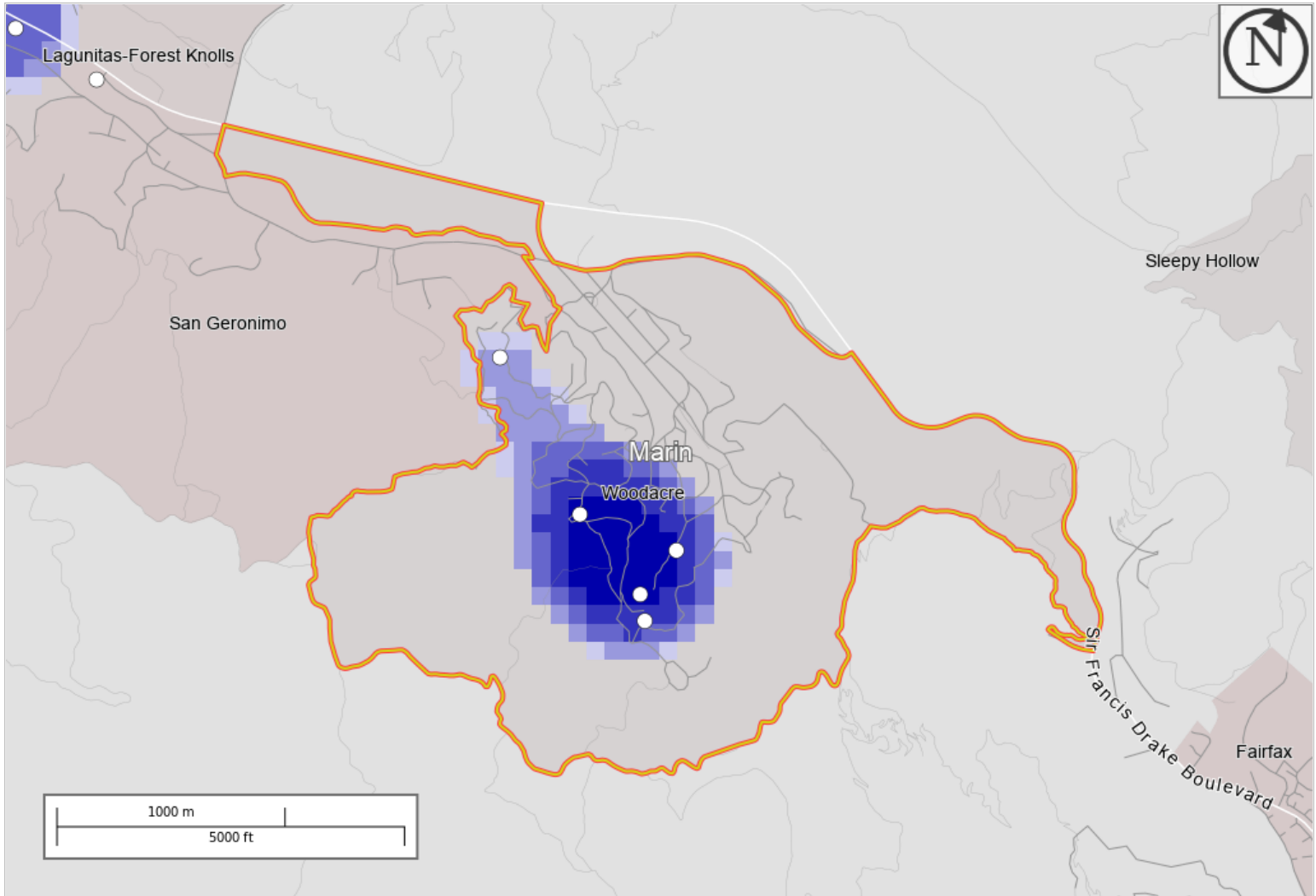
## Distance/Direction Report - Work to Home

### All Jobs for All Workers in 2019

Created by the U.S. Census Bureau's OnTheMap <https://onthemap.ces.census.gov> on 01/12/2022

## Counts and Density of Home Locations for All Jobs in Work Selection Area in 2019

### All Workers



### Map Legend

**Job Density [Jobs/Sq. Mile]**

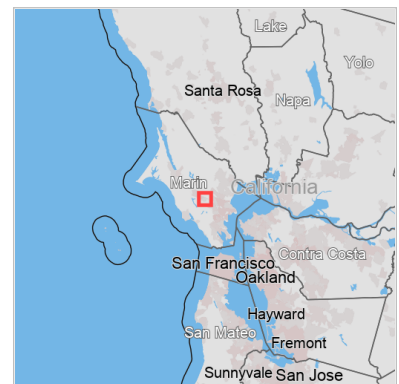
■ 5 - 8

**Job Count [Jobs/Census Block]**

○ 1 - 3

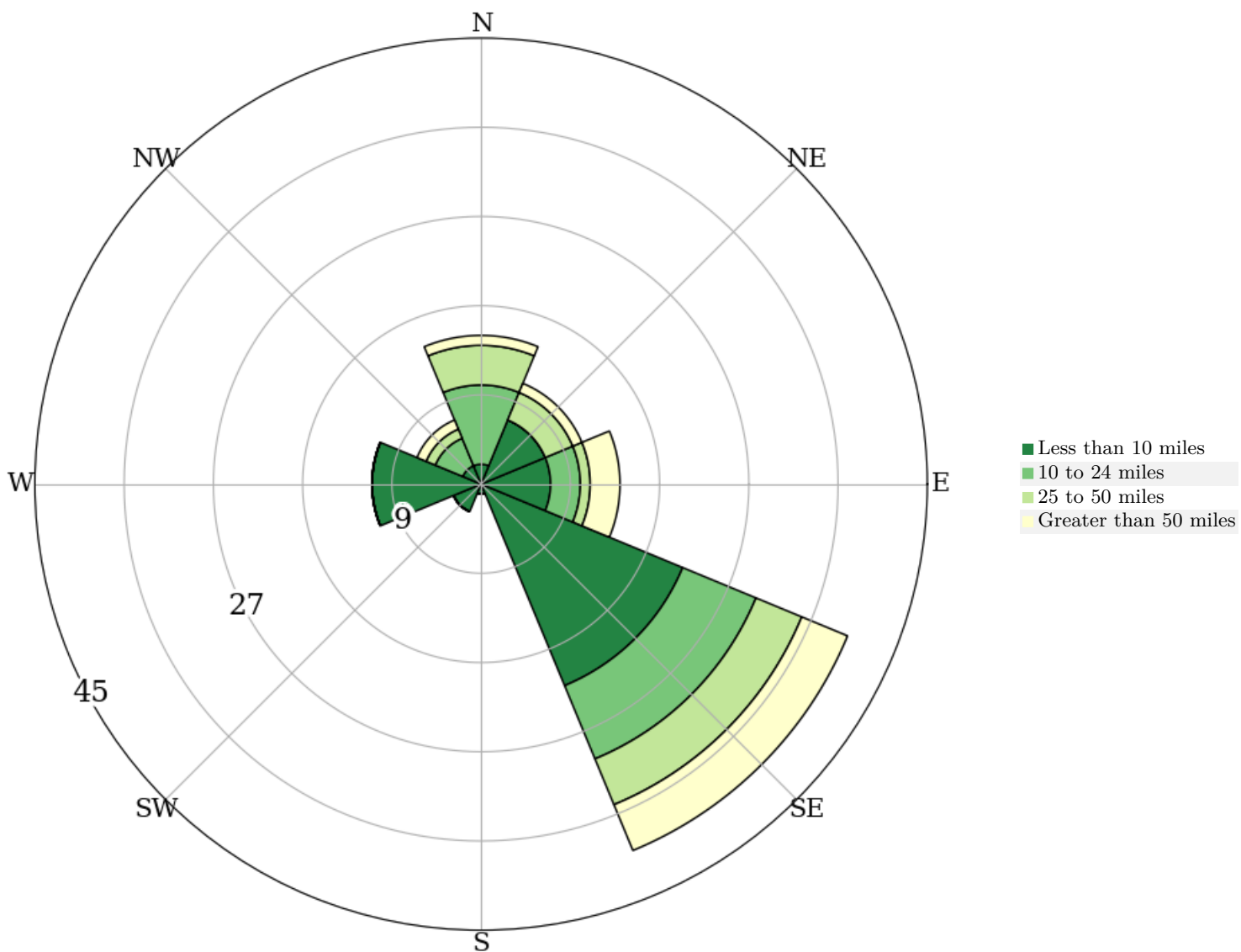
**Selection Areas**

🔴 Analysis Selection



## All Jobs for All Workers in 2019

Distance and Direction from Work Census Block to Home Census Block, Employed in Selection Area



## All Jobs for All Workers in 2019

Distance from Work Census Block to Home Census Block, Employed in Selection Area

Distance	2019	
	Count	Share
<b>Total All Jobs</b>	102	100.0
<b>Less than 10 miles</b>	55	53.9
<b>10 to 24 miles</b>	22	21.6
<b>25 to 50 miles</b>	14	13.7
<b>Greater than 50 miles</b>	11	10.8

## Additional Information

### Analysis Settings

<b>Analysis Type</b>	Distance/Direction
<b>Selection area as</b>	Work
<b>Year(s)</b>	2019
<b>Job Type</b>	All Jobs
<b>Selection Area</b>	Woodacre CDP, CA from Places (Cities, CDPs, etc.)
<b>Selected Census Blocks</b>	42
<b>Analysis Generation Date</b>	01/12/2022 22:44 - OnTheMap 6.8.1
<b>Code Revision</b>	f9358819d46a60bb89052036516a1c8fe8bbbbeac
<b>LODES Data Version</b>	20211018_1647

### Data Sources

Source: U.S. Census Bureau, OnTheMap Application and LEHD Origin-Destination Employment Statistics (Beginning of Quarter Employment, 2nd Quarter of 2002-2019).

### Notes

1. Race, Ethnicity, Educational Attainment, and Sex statistics are beta release results and are not available before 2009.
2. Educational Attainment is only produced for workers aged 30 and over.
3. Firm Age and Firm Size statistics are beta release results for All Private jobs and are not available before 2011.